

# First Data of KM3NeT

**Nikhef**



K.W. Melis  
Jamboree 2015  
December 15, 2015

# Outline

Deployment 03/12,  
09:00h

Inspection 03/12,  
18:49h

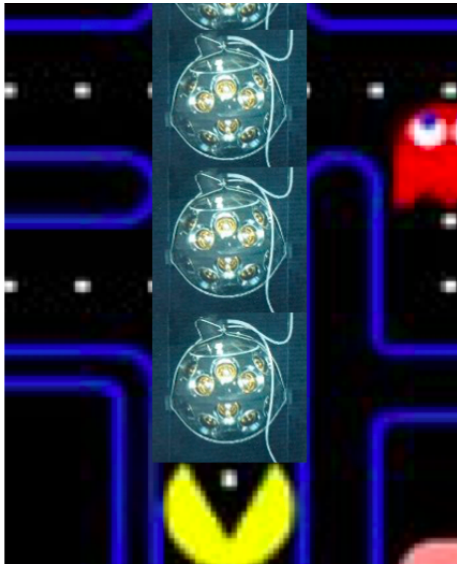
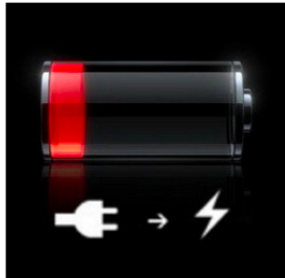
Power-on 04/12,  
09:26h

First data 04/12,  
16:52h

First muons 04/12,  
17:49h



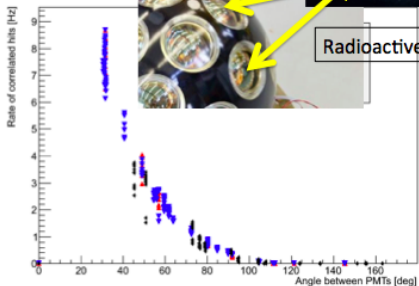
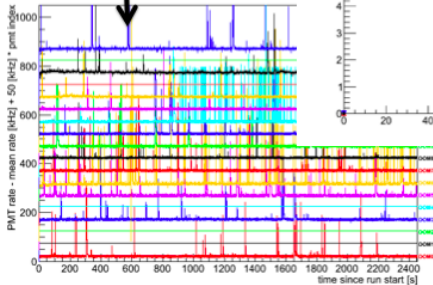
# First checks: Does it work?



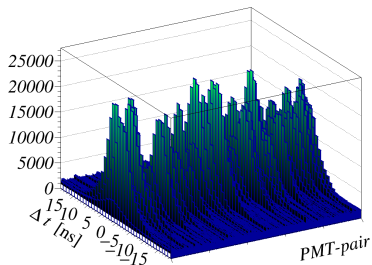
# Coincidence rate between PMTs (plots by M. Jongen)



Summary slice timestreams for:



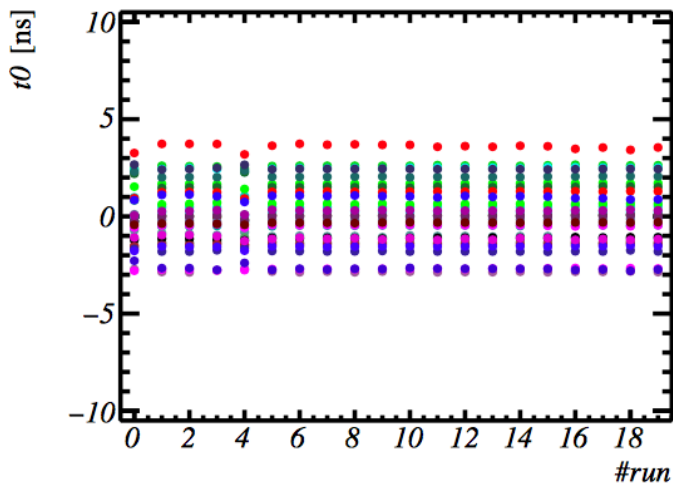
$^{40}\text{K}$  Coincidence rate between PMTs:



- ▶ Simultaneous fit of all PMT characteristics:
- ▶ Mean: PMT transit time
- ▶ Area: PMT efficiency
- ▶ Width: Transit time spread

## Data quality

PMT transit times of one DOM:



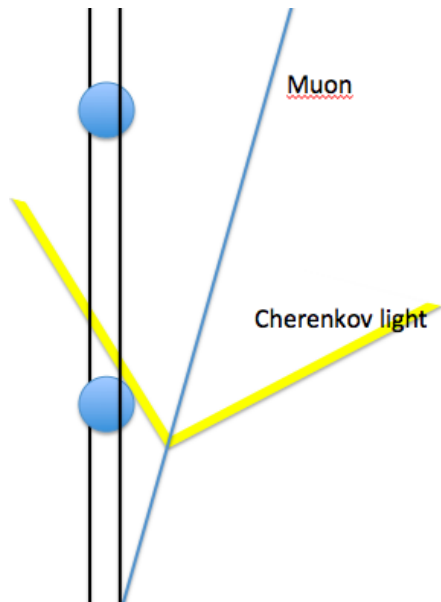
Stable data, sub-ns timing calibration



**KM3NeT**

*Opens a new window on our universe*

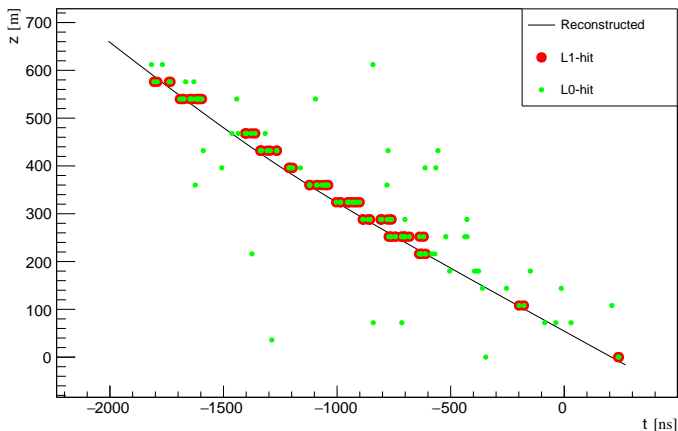
## Reconstruction: Principle



- ▶ Maximum Likelihood approach
- ▶ Including
  - ▶ Hit times
  - ▶ DOM hit/not hit
- ▶ Excluding:
  - ▶ PMT-level information



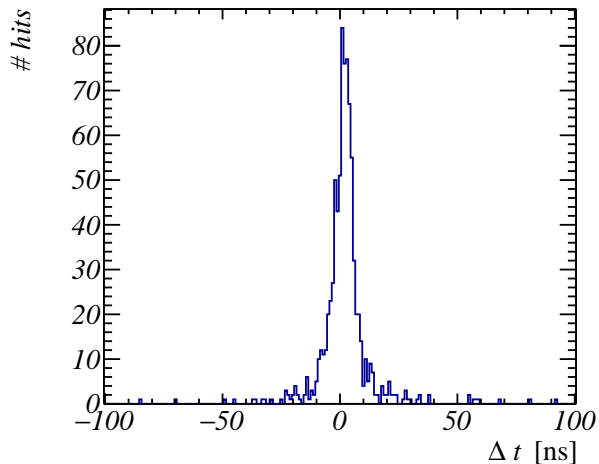
# First muons seen with KM3NeT



One day after power-on, one hour after first data

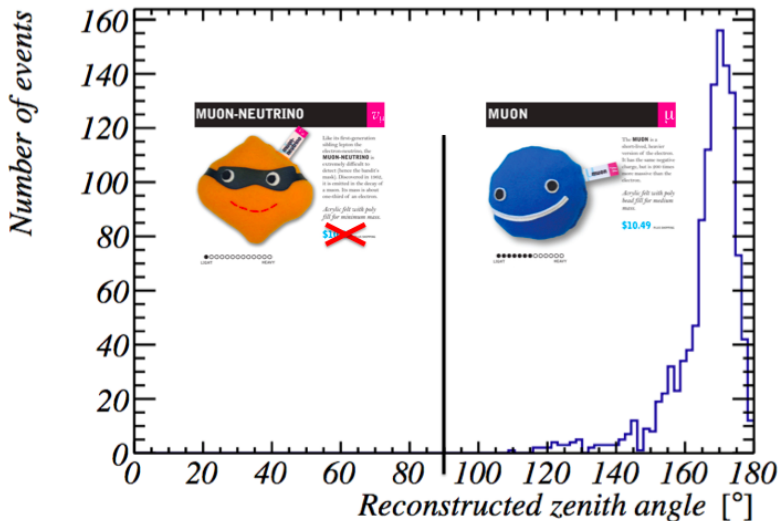
## First results: Time residuals

Difference between measured and expected hit time on one DOM:



Nearly sub-ns timing calibration

# First results: Zenith distribution



# Outlook

