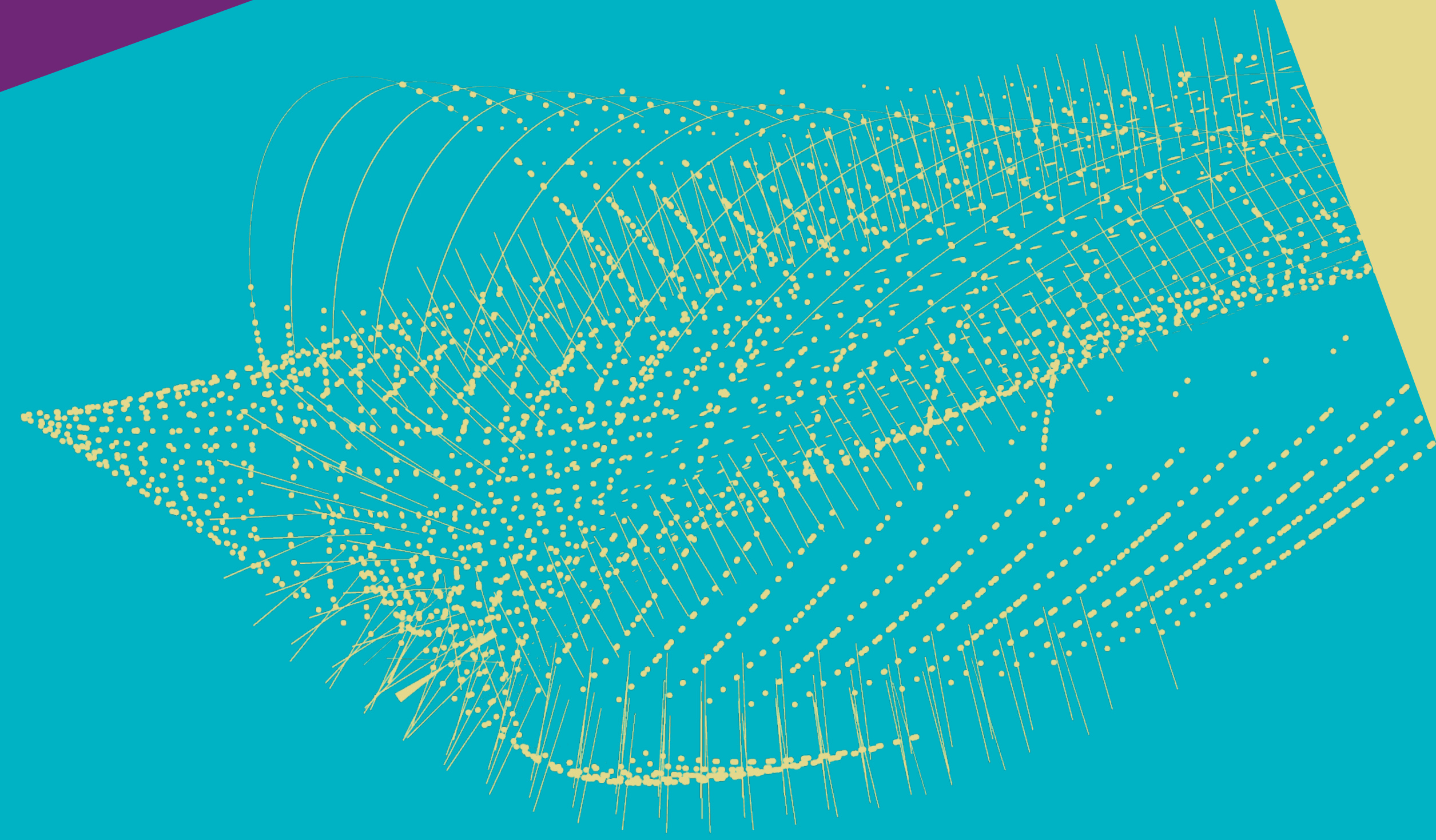




RONALD STARINK

# COMPUTER TECHNOLOGY OVERVIEW

Jamboree 2024



# CT-PO: software engineering

- Project Ondersteuning
  - Karol's presentation
  - Demo CT-PO
  - Demo White Rabbit (ET)

*Henk – Karol – Kostis – Lennie – Marc – Miron  
– Mischa – Ton*

# CT-PDP: Hands of the PDP programme

- PDP session
- Demo Stoomboot / data centre

*Andrew – Catharina – DanielG – Dennis – Erik  
– Mary – Mischa – Sil – Sven – Tristan*

# HADRON - INSTITUTIONAL DATA REPOSITORY

- djeHuty Archival Data Repository Op Nikhef
  - (pre)published data, software, metadata
- Developed by TUD + Nikhef
  - To come: metadata search 4TU

<https://kb.nikhef.nl/ct/Hadron.html>

IN PRODUCTION:  
THIS SUMMER

The screenshot shows the Hadron Institutional Data Repository website. At the top, a red banner reads "This is the local development." The Nikhef logo is in the top left, and a search bar is in the top right. Below the search bar, there are icons for a checklist, settings, and a "DASHBOARD" button, along with a "LOG OUT" button and a user profile icon. The main content area is divided into sections: "SUMMARY" with a table of statistics, "INSTITUTIONS" with logos for TU Delft, University of Twente, TU/e, Wageningen University & Research, and Other Institutions, and "SUBJECTS [ALL]" with a row of image thumbnails.

SUMMARY	
0	datasets
1	authors
0	collections
0	files
0	bytes

**INSTITUTIONS**

- TU Delft
- UNIVERSITY OF TWENTE.
- TU/e EINDHOVEN UNIVERSITY OF TECHNOLOGY
- WAGENINGEN UNIVERSITY & RESEARCH
- Other Institutions

**SUBJECTS [ALL]**

Thumbnail 1: Mathematical equations  $X_{1/2} = \frac{1 + \sqrt{1 - 4ac}}{2a}$  and  $a \cdot \frac{1}{2} x$

Thumbnail 2: Blue abstract image

Thumbnail 3: Laboratory equipment

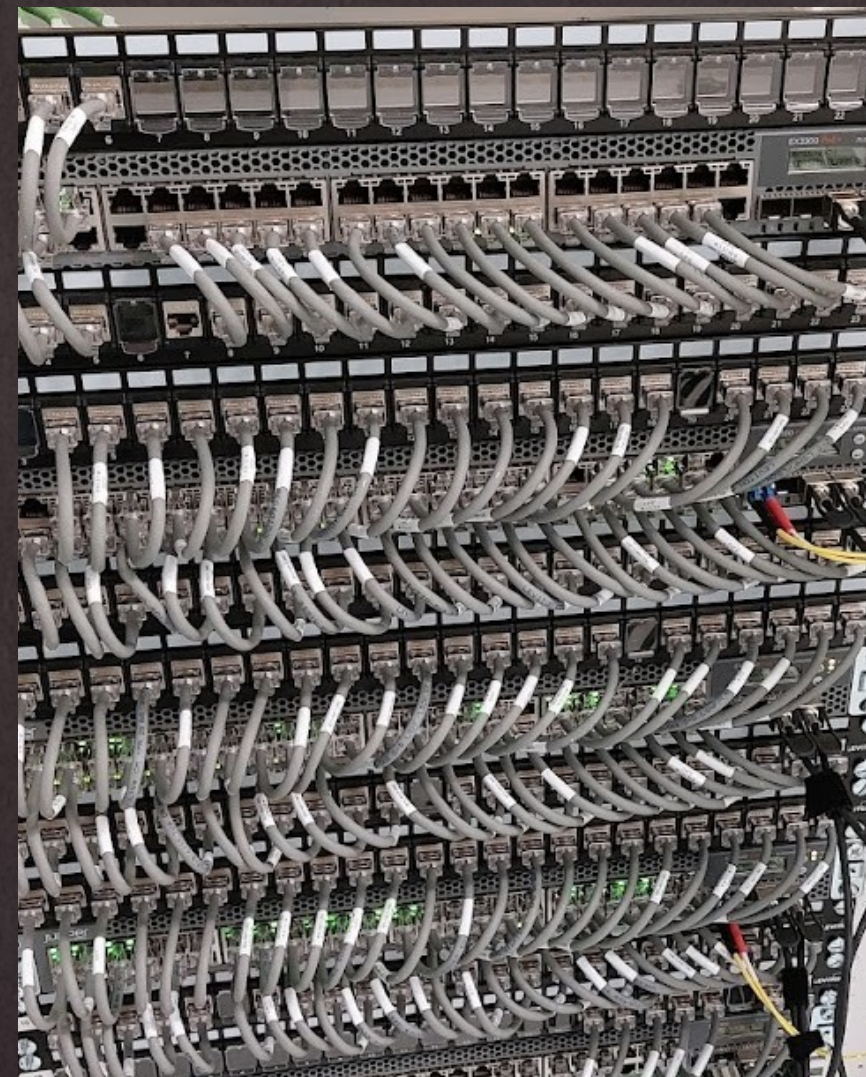
Thumbnail 4: Earth from space

Thumbnail 5: Blue abstract image



# CT-B

- What the B is not:
  - ~~Behind the scenes~~
    - → Demo internal network
  - Behulpzaam
  - Balancing
  - Brandweer
  - Burdened
  - Beveiliging



*Arthur – Bart – DanielG –  
DanielK – Erik – Kevin –  
Mark – Mattijs – Sil – Sven  
– Ting*



Ni|k|hef

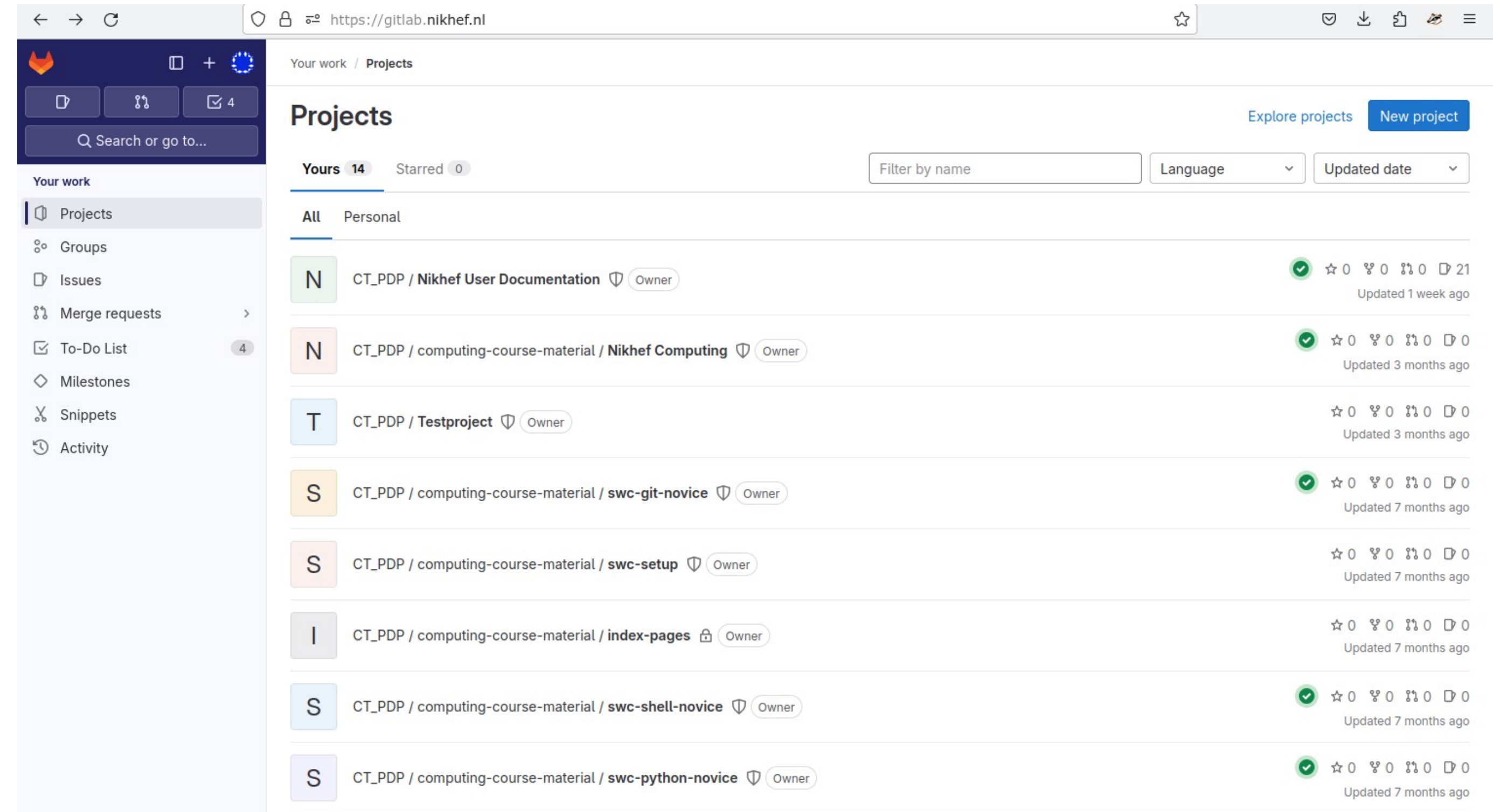


# CT-gitlab

## → Demo: What Can I Do With Gitlab?

A practical introduction to sharing and collaborating for project working groups.

- What is Gitlab and who is it for?
- Introduction to the web interface.
- How to use of it for your work.
- Practical examples of useful features.

A screenshot of the GitLab web interface. The browser address bar shows 'https://gitlab.nikhef.nl'. The page title is 'Your work / Projects'. The main content area displays a list of projects under the 'Yours' tab, with 14 projects listed. The projects are: 'CT\_PDP / Nikhef User Documentation' (Updated 1 week ago), 'CT\_PDP / computing-course-material / Nikhef Computing' (Updated 3 months ago), 'CT\_PDP / Testproject' (Updated 3 months ago), 'CT\_PDP / computing-course-material / swc-git-novice' (Updated 7 months ago), 'CT\_PDP / computing-course-material / swc-setup' (Updated 7 months ago), 'CT\_PDP / computing-course-material / index-pages' (Updated 7 months ago), 'CT\_PDP / computing-course-material / swc-shell-novice' (Updated 7 months ago), and 'CT\_PDP / computing-course-material / swc-python-novice' (Updated 7 months ago). The left sidebar shows navigation options: Projects, Groups, Issues, Merge requests, To-Do List (4), Milestones, Snippets, and Activity. The top right has 'Explore projects' and 'New project' buttons. The main content area has filters for 'Filter by name', 'Language', and 'Updated date'.

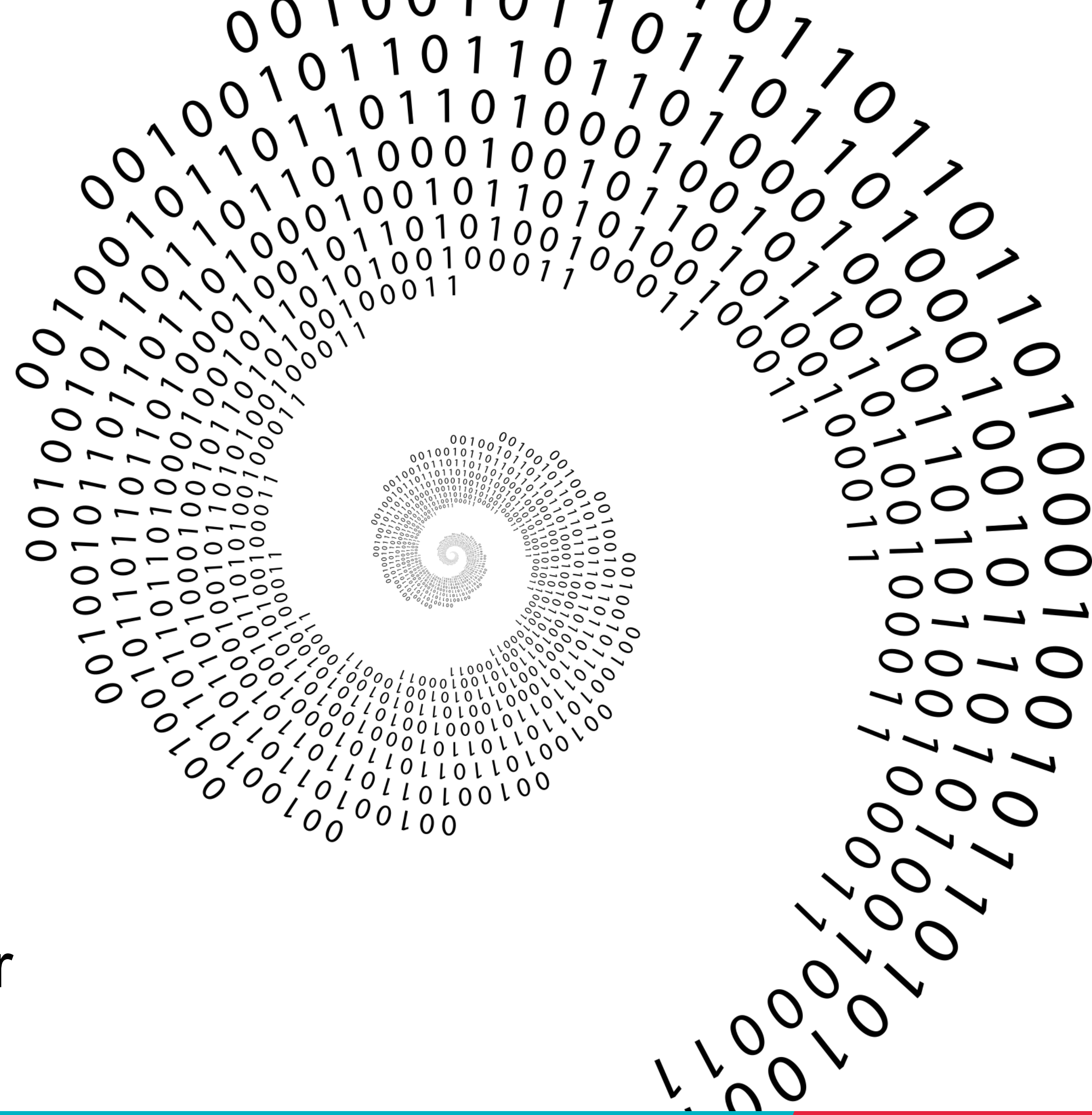
# CT-Beheer!

IT solutions to let you do your job

- Hardware
- Software
- Networking
- Support & advice

# NIKHEF CSIRT

- IT security in general
  - Security at Nikhef
  - Services & Support
  - Incident Response
- Demo Security Operations Center





# Physical Safety :-)

- Fujitsu monitors: risk of residual electric charge



**WARNING**



Do not remove connector before  
prior notice to the Helpdesk.  
Dangerous voltage on connector pins!

