

A black and white photograph capturing the process of metal turning on a lathe. The central focus is the rotating tool bit as it cuts a groove into a cylindrical metal workpiece. The tool bit is positioned on the left, and the workpiece is being machined from the right. The resulting metal shavings are scattered across the work surface. The word "METAL" is overlaid in a large, bold, serif font across the upper right portion of the image. The background is a plain, light-colored surface, possibly the lathe bed or a workbench.

METAL

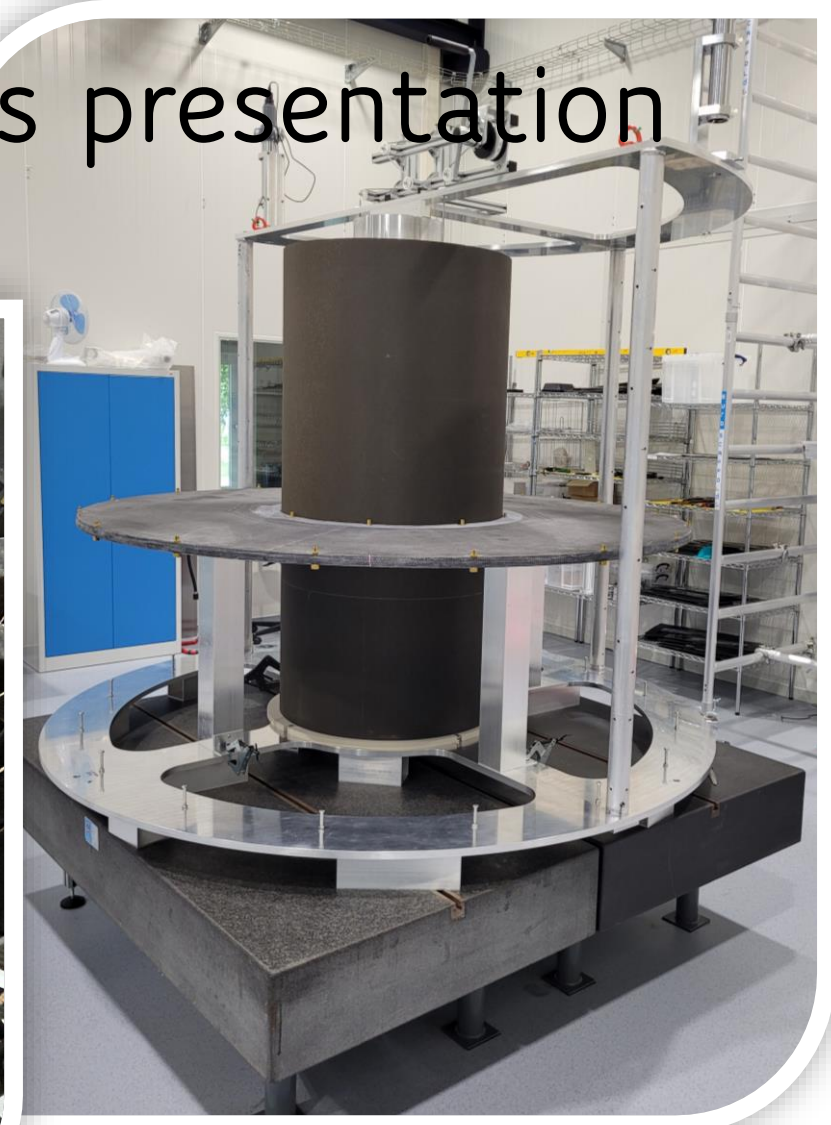
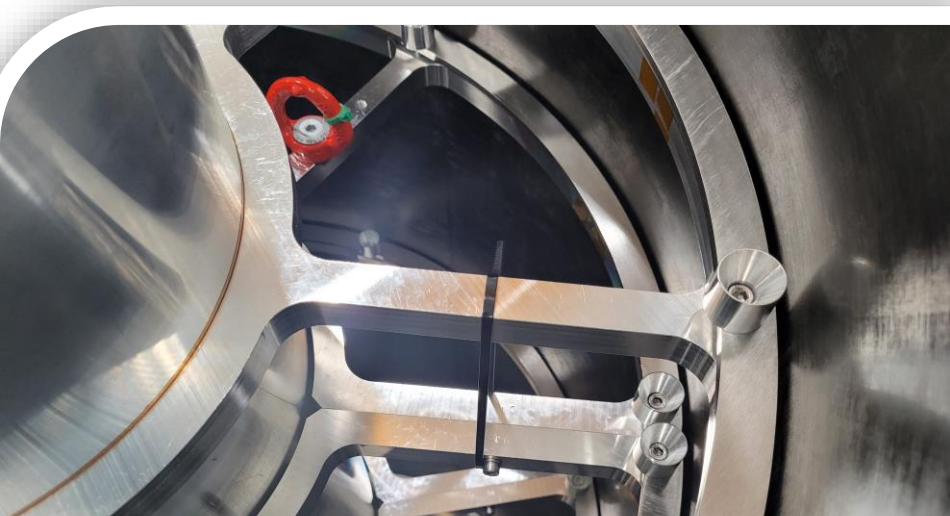
My job

- Technician
- Atlas ITK



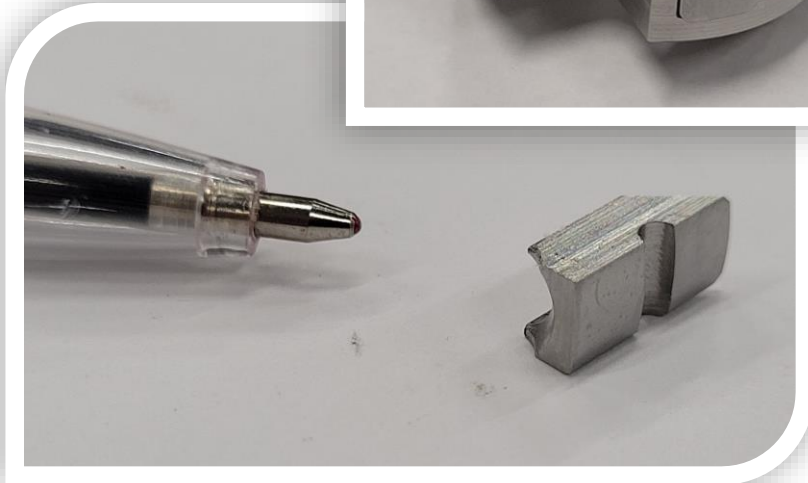
Relation metal / no metal / this presentation

- ITK Structure
- Boat building
- Why do we have the big workshop



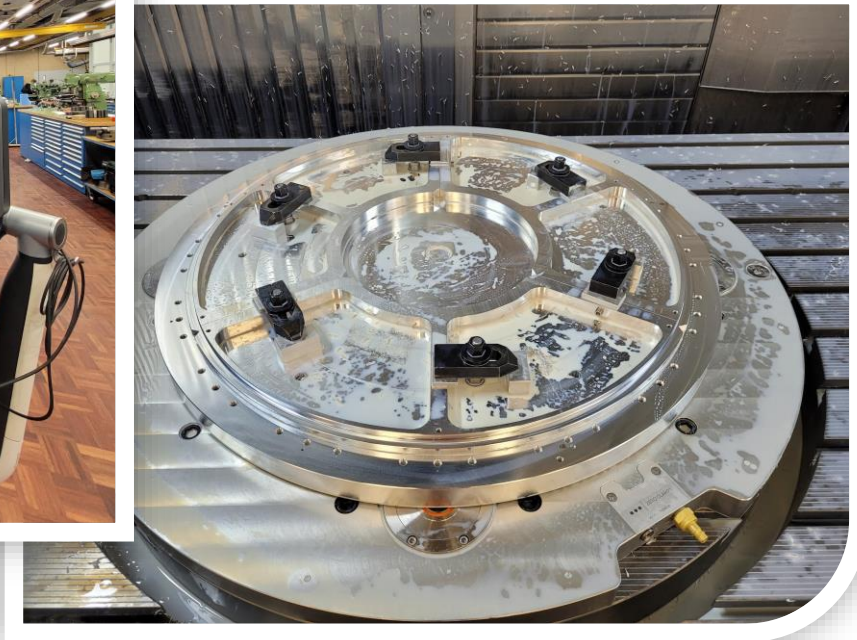
Why do we use metal

- Strong
- Accurate
- Support
- Quick
- Shiny



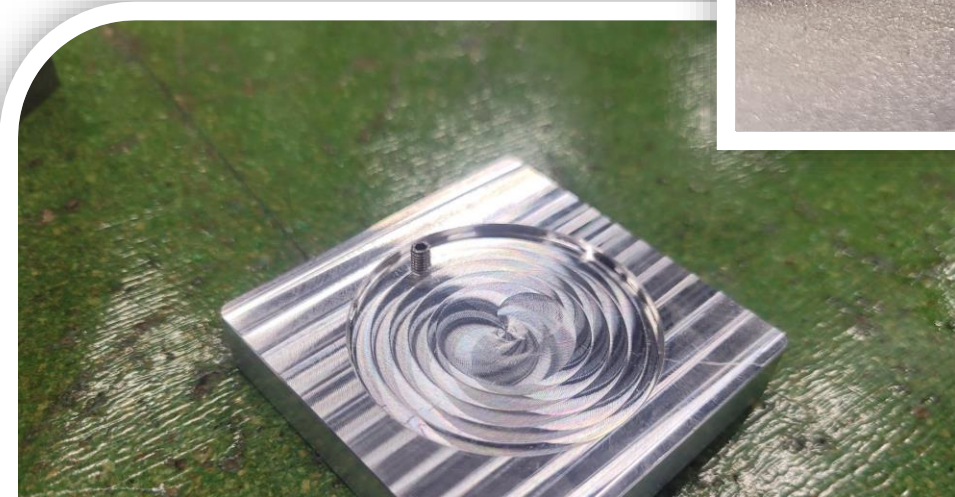
How do we metal

- (CNC) machines
- Welding
- Folding
- Bolting

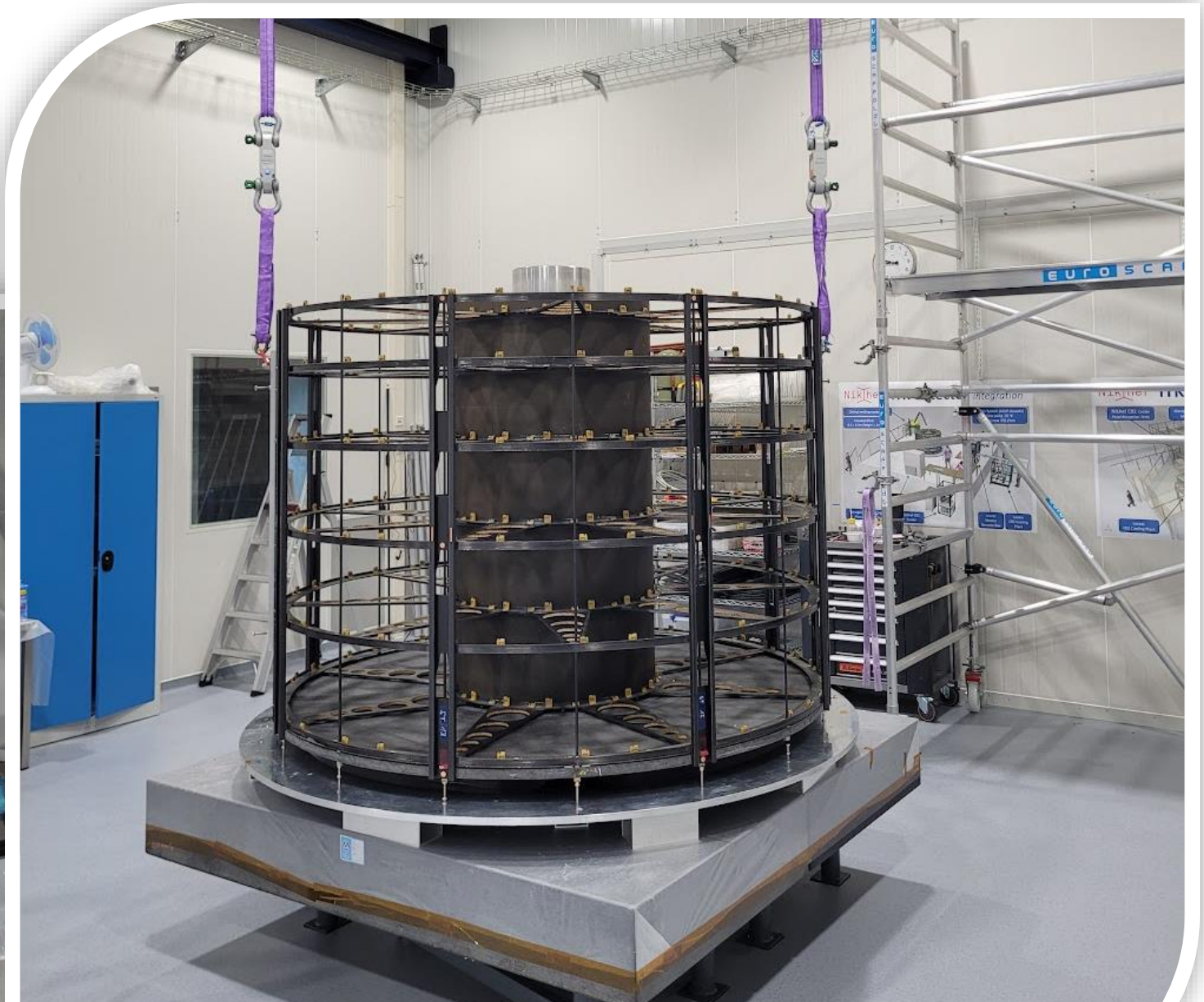


Different kinds of metal

- Stainless
- ALU
- Brass



End product



METAL

Jelle van der Werff

Nikhef

Thanks!