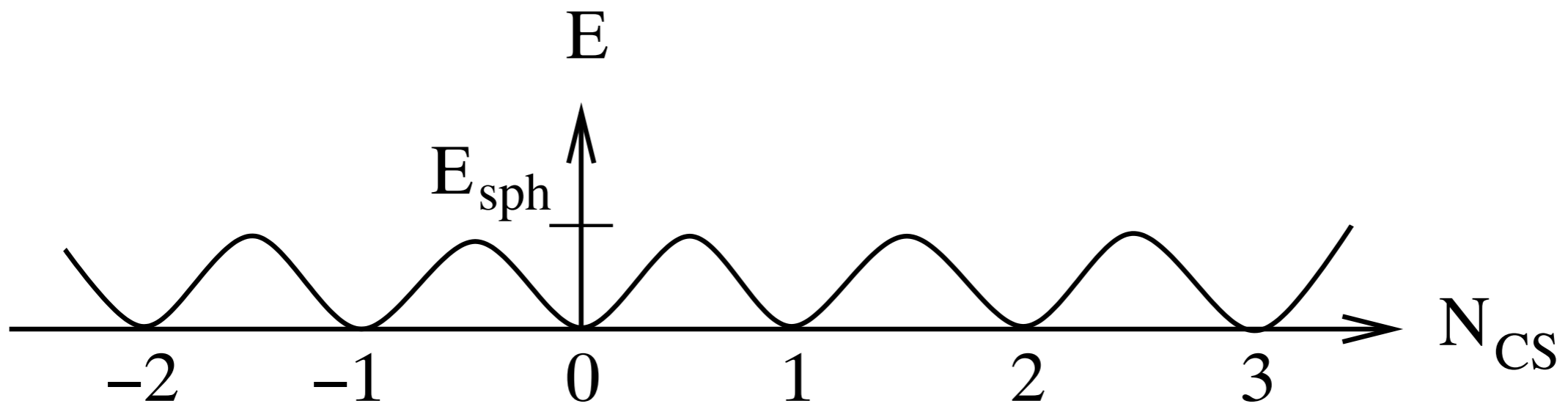
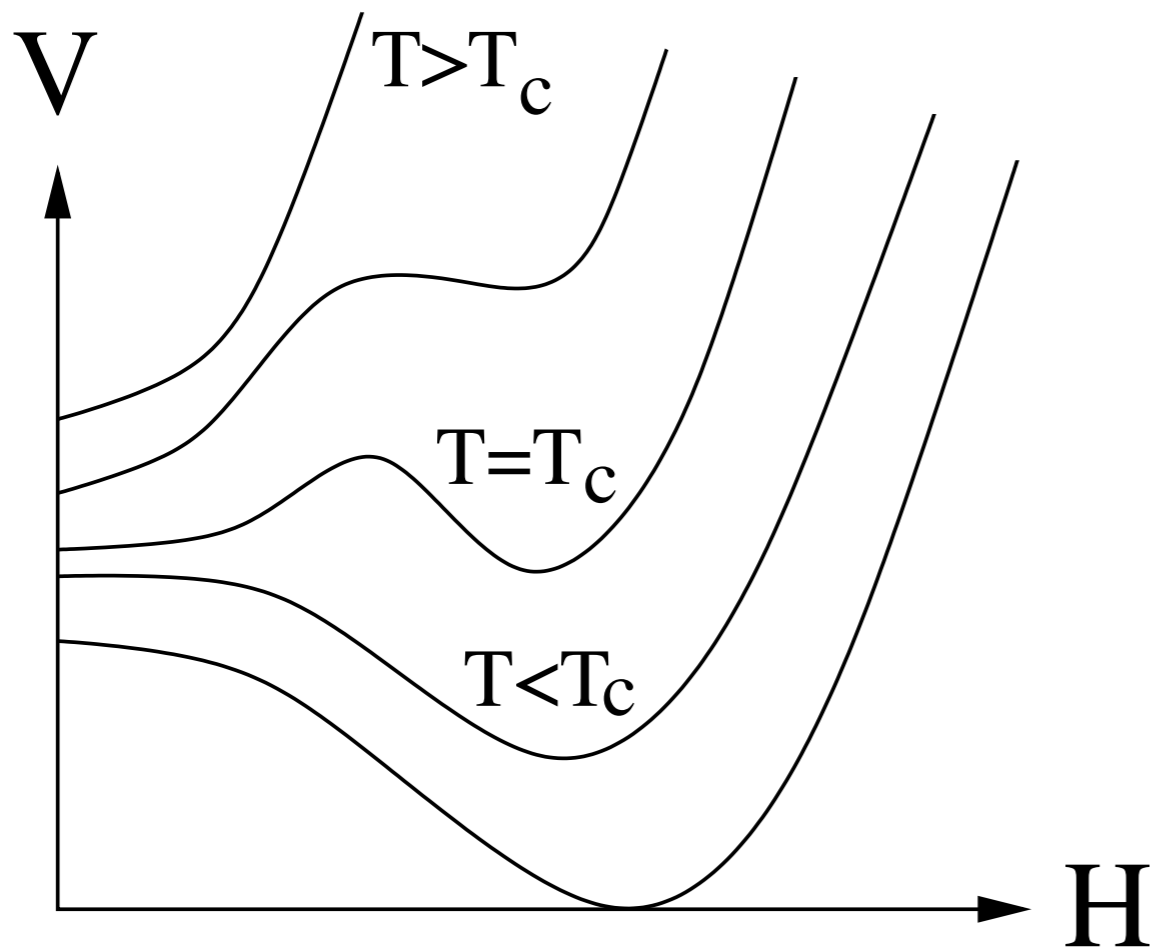


e.g. $u + d \rightarrow \bar{d} + 2\bar{s} + \bar{c} + 2\bar{b} + \bar{t} + \bar{\nu}_e + \bar{\nu}_\mu + \bar{\nu}_\tau$

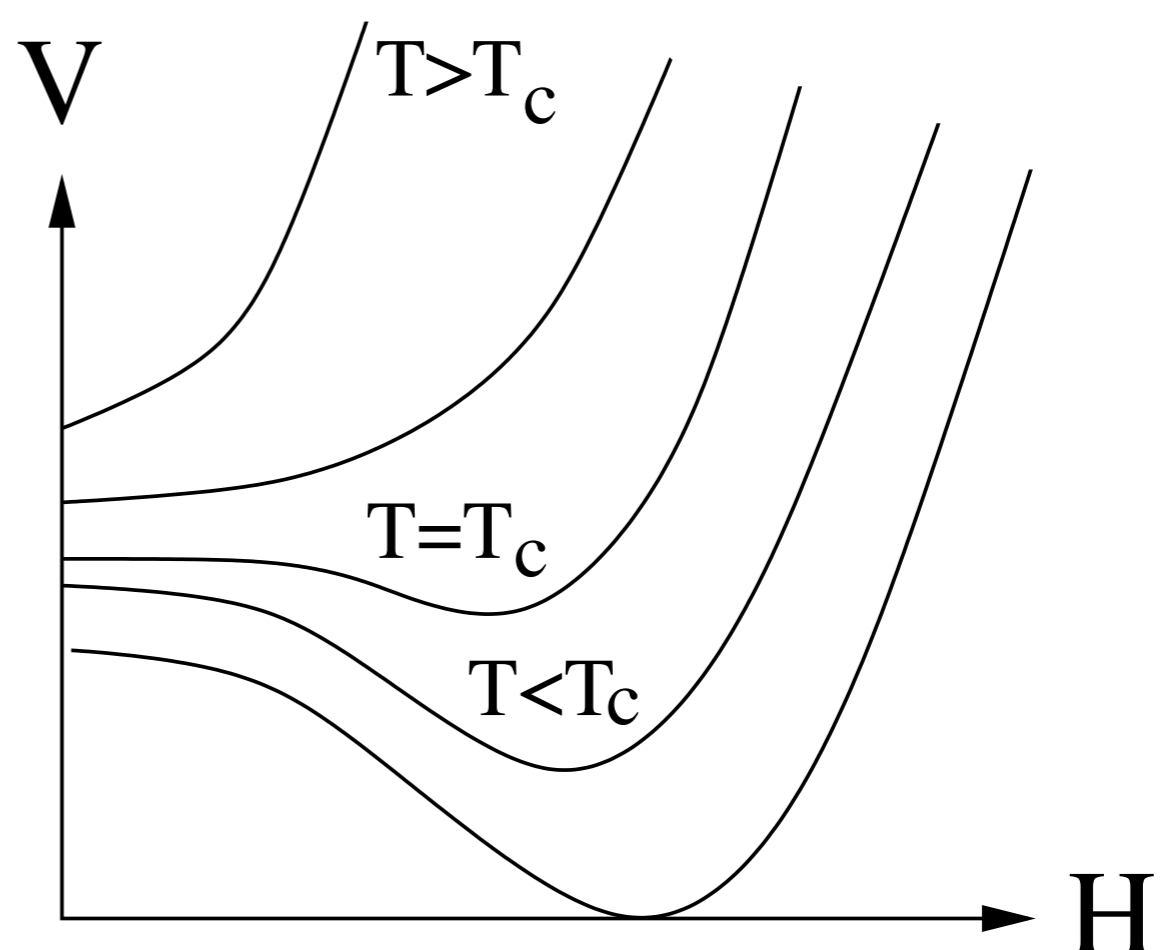
$$\Delta B = \Delta L = -3$$



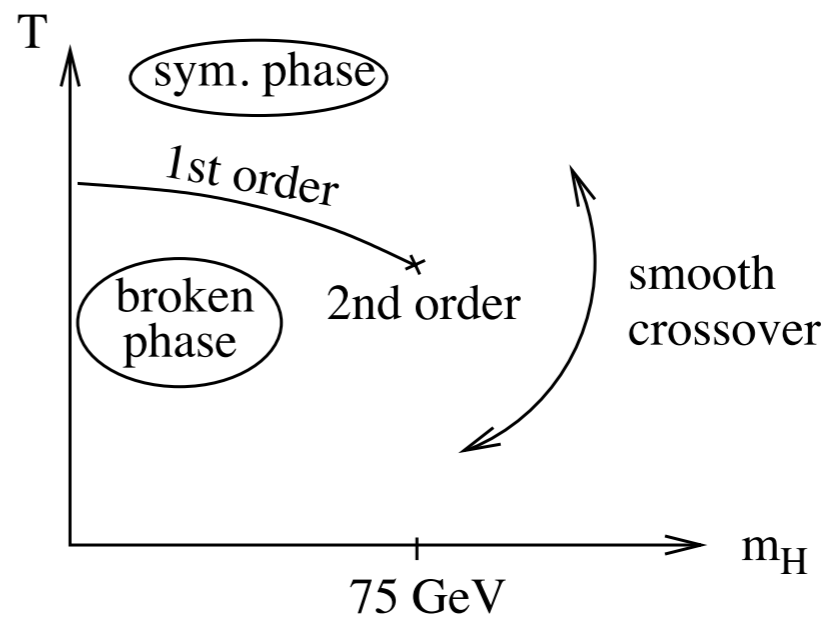
$$E_{sph} = 1.6 - 2.7 \times \frac{2M_W(\phi)}{\alpha_W}$$

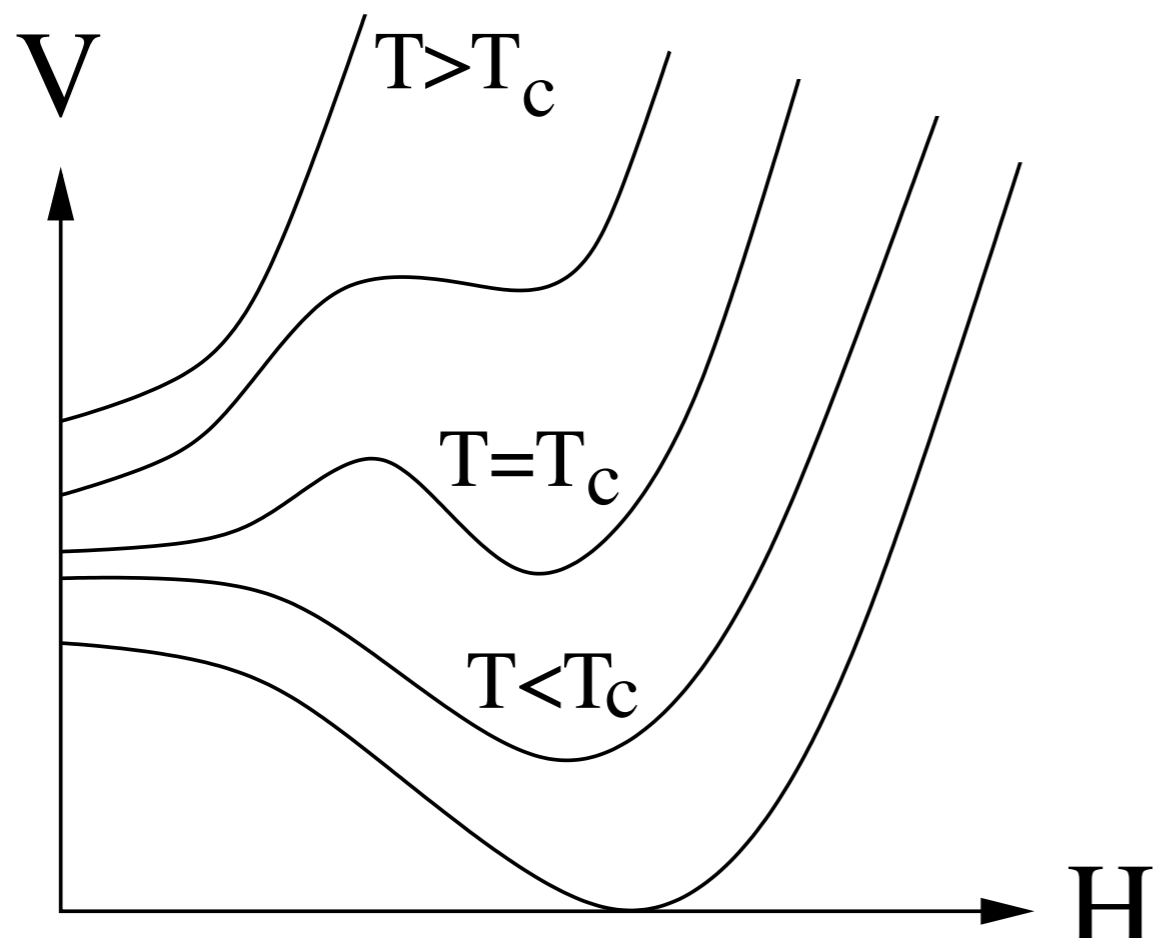


1st order phase transition

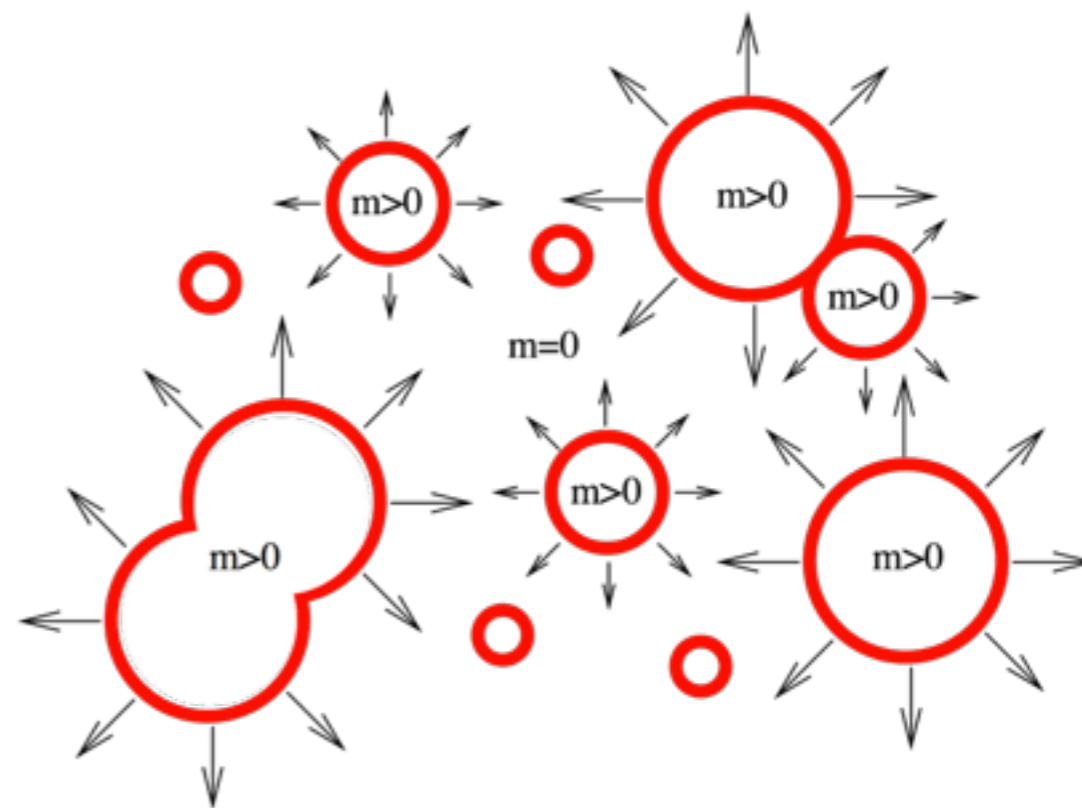


2nd order / crossover phase transition

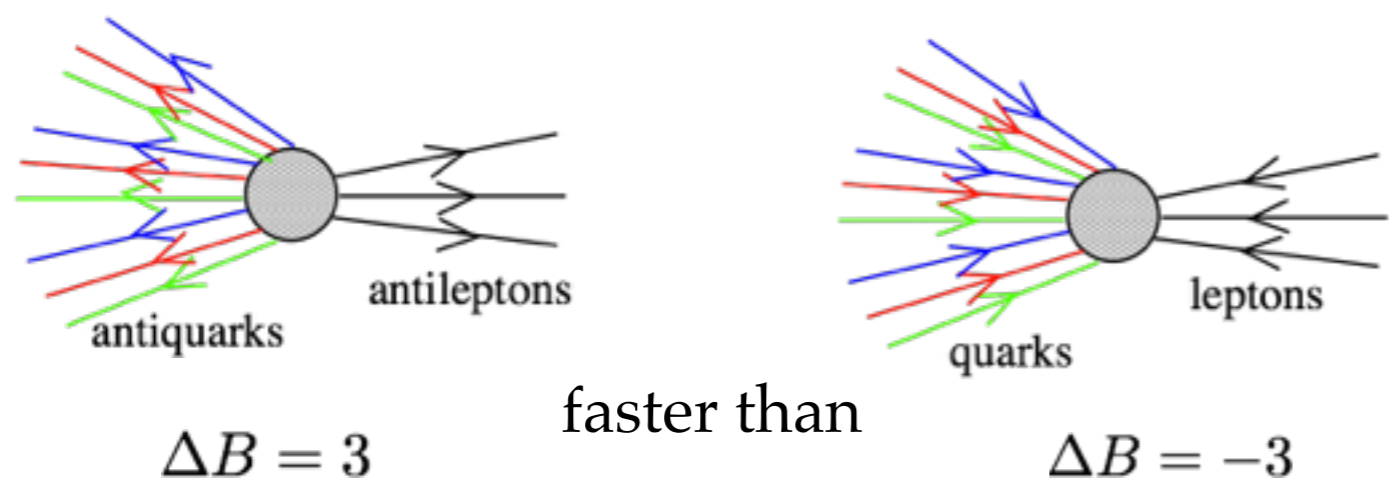
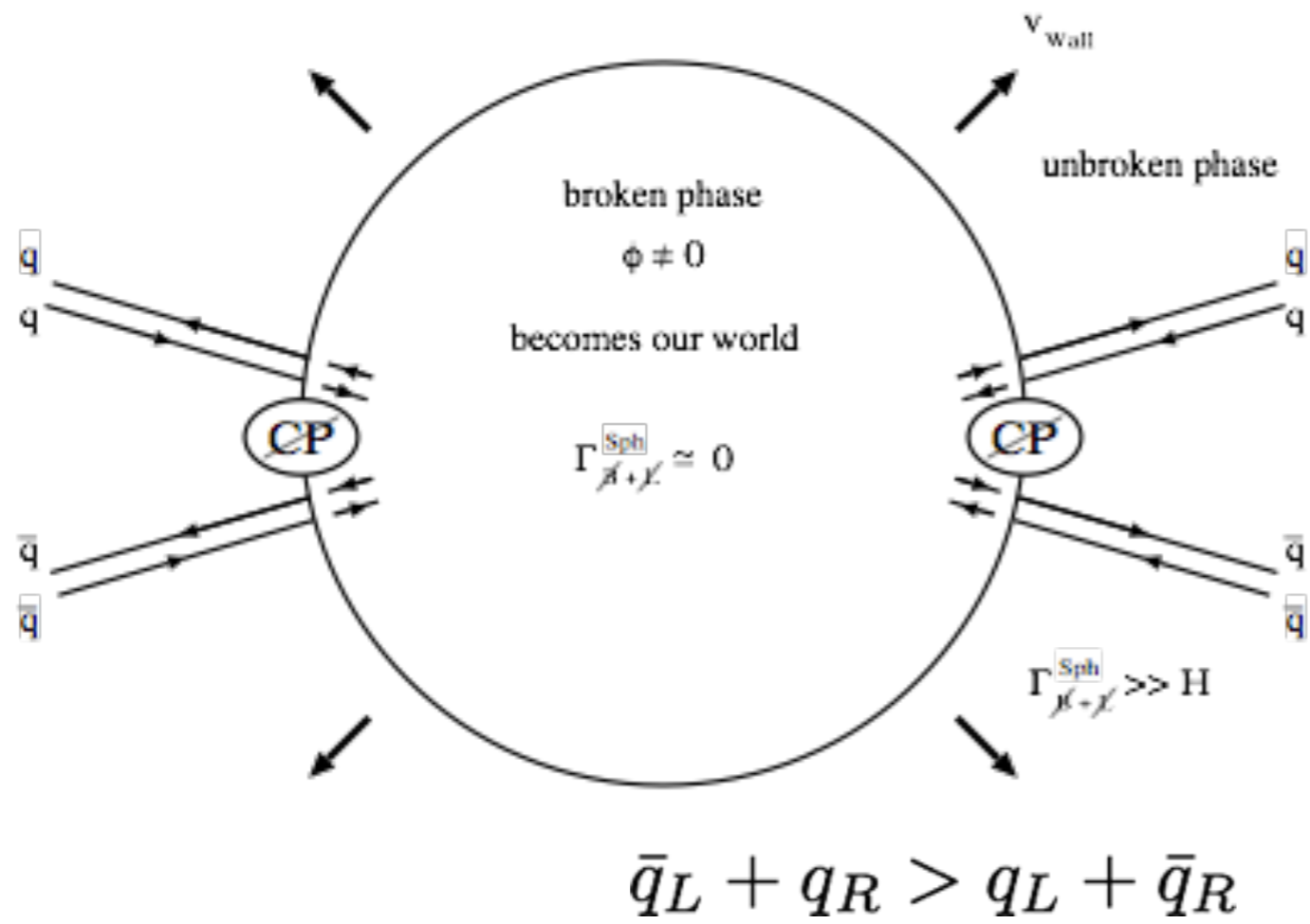




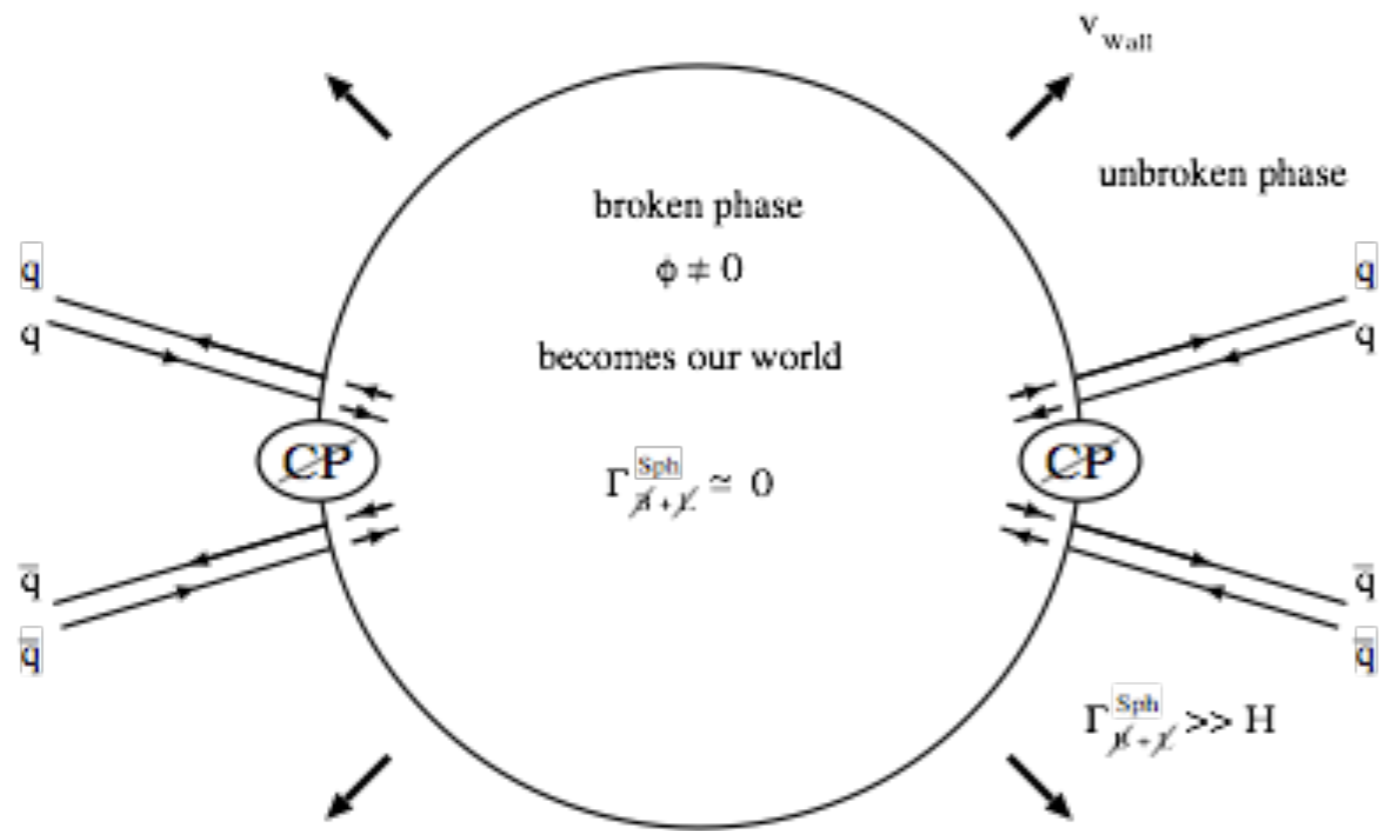
1st order phase transition



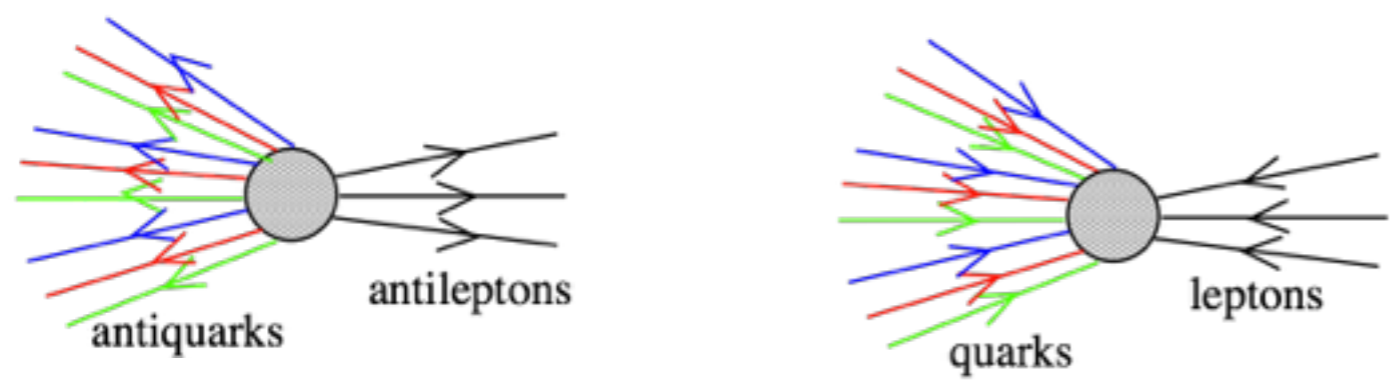
EW baryogenesis



EW baryogenesis

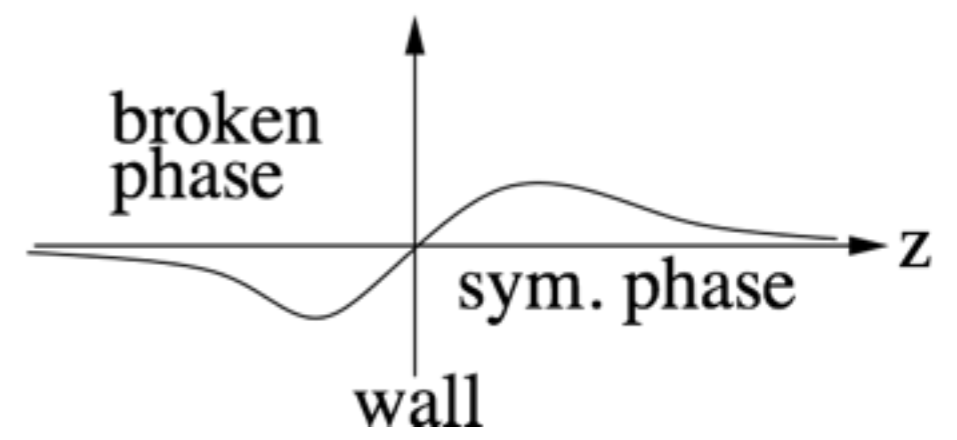


$$\bar{q}_L + q_R > q_L + \bar{q}_R$$

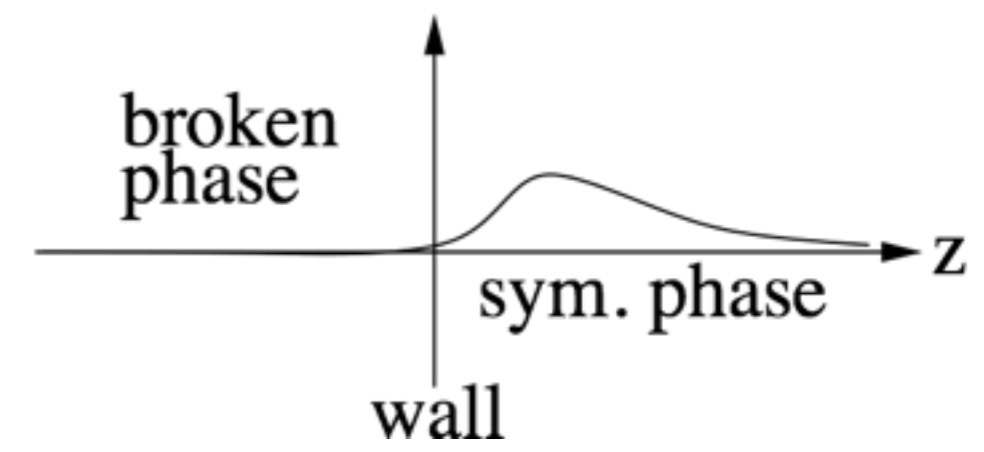


faster than

CP asymmetry



B asymmetry



EW baryogenesis

