

DOM integration : testing process

Valentin Pestel

Nikhef group meeting - 17/09/2020

Testing environment

Current testing environment is being cleaned and optimised :

- Git repository available here : <https://git.km3net.de/vpestel/tedi>
- Scripts available on Remora (test machine) :
 - /localstore/network_drive/testscripts

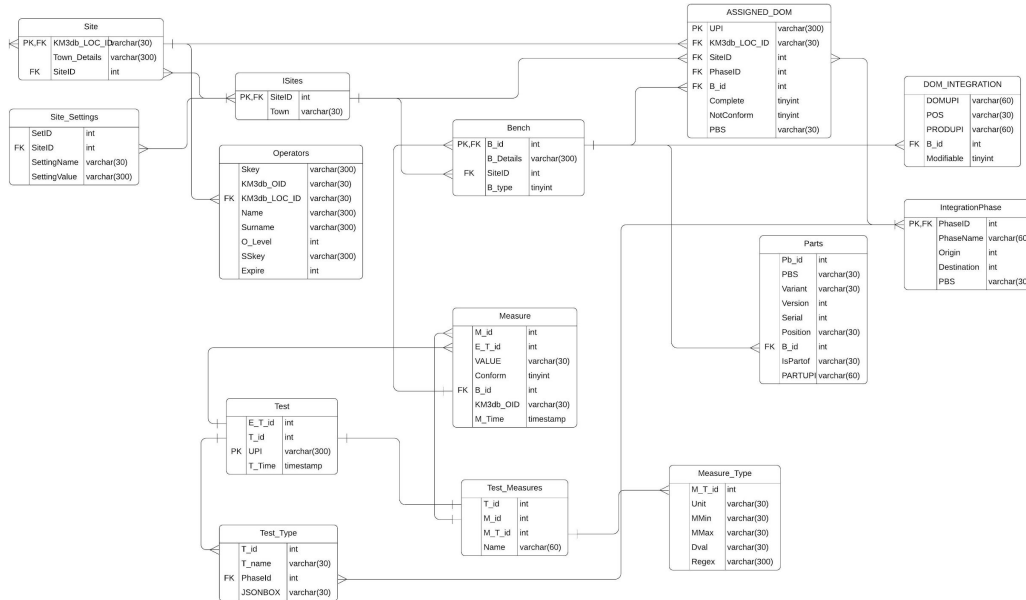
If shifters encounter issues with scripts or have proposal to improve environment, you can now post issue in this repo !

Still to do :

- Updating the shifter documentation to meet the new paths etc ...

DOM integration and testing : Overview tool

DIA is missing a tool to access the data easily. Try to come up with a solution for that. Main issue, DIA DB format :



DOM integration and testing : Overview tool

Current solution :

- Format the DB in a google spreadsheet. Available [here](#).

Technically :

1. Clone DIA DB on Remora
2. Format it to a table (1 line per DOM) and save it to pandas dataframe (.H5).
3. Export the table to google spreadsheet.

Automatically updated, every hour. Git repo available [here](#).

Bonus

Data now available in a simple format. Make life easier to produce plots etc ...

Also, live(ish) summary for Nikhef :

<https://www.nikhef.nl/~vpestel/NikhefIntegrationSummary.html>

