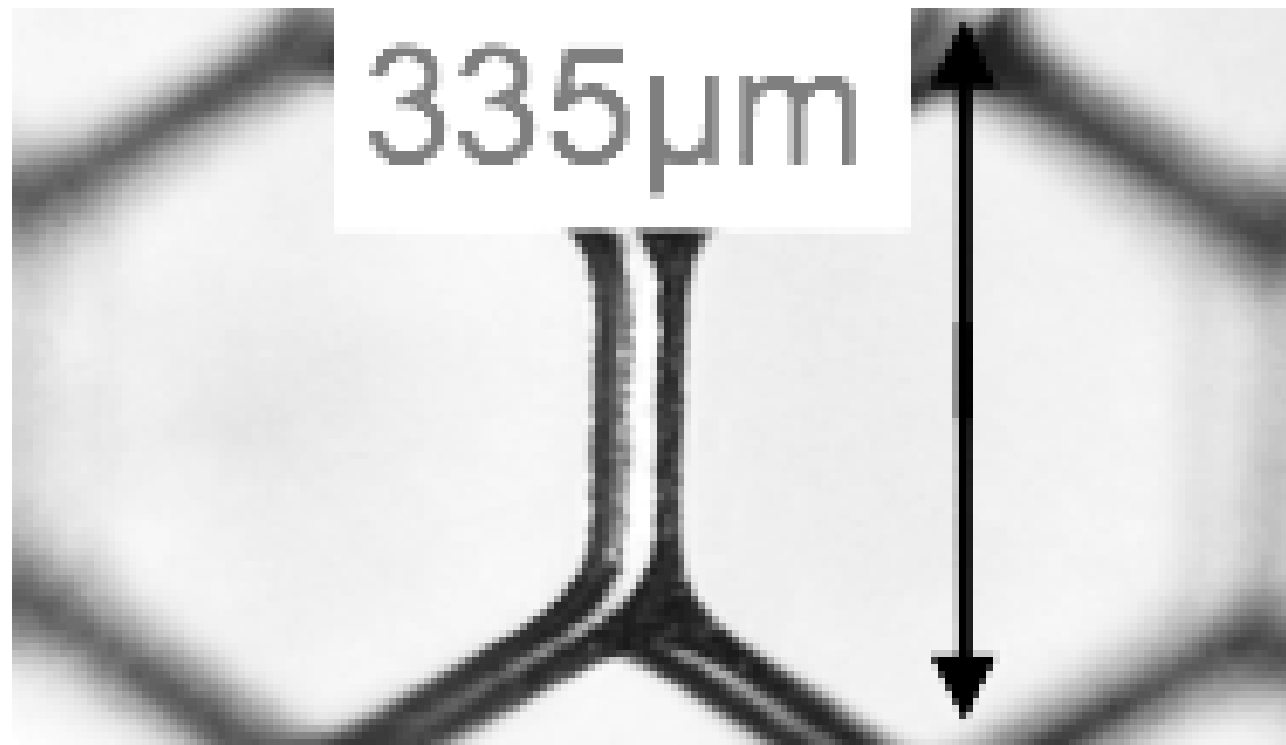




Ion grid

Fred Hartjes
NIKHEF

Nikhef/Bonn LepCol meeting
March 23, 2020



Integrating the gating grid into the 8-quad testbox

- G10 frame of 174.4 x 74.8
- Aperture 150.2 x 64.8
- **Grid 158.2 x 74.0 mm**
- Grid glued onto the frame
- Note that the frame cuts on each short end 4 mm from the acceptance of the 8-quad surface
 - We can avoid this if it would be possible to cut tiny parts from the 4 corners

