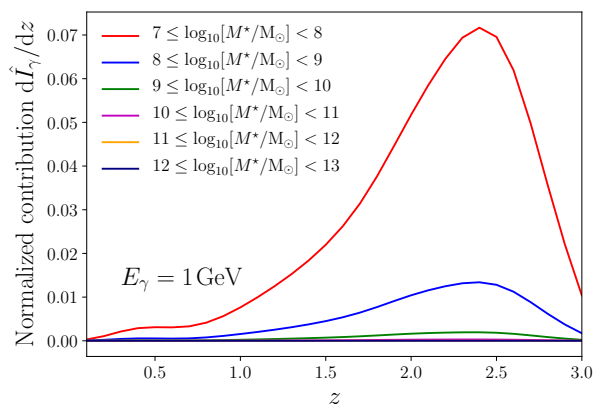
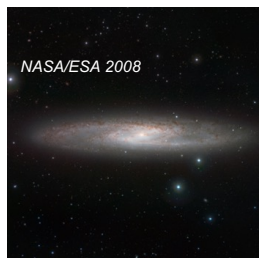
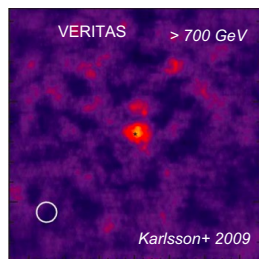
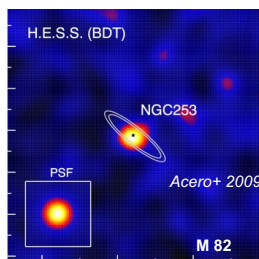


Unveiling the properties of star-forming galaxy populations in the γ -ray sky



- Nearby SFGs are detected in γ -rays
- We adopt a prototype model to study the contribution of SFG populations over redshift
- We use population models to discern the SFGs that dominate the γ -ray background (low mass, intensive starbursts around $z \sim 2$ -2.5)
- Show this can be used to probe CR feedback in galaxies over cosmic time

