



# Measuring the DOM's acceptance

---

Thursday 28 march  
Thijs van Eeden

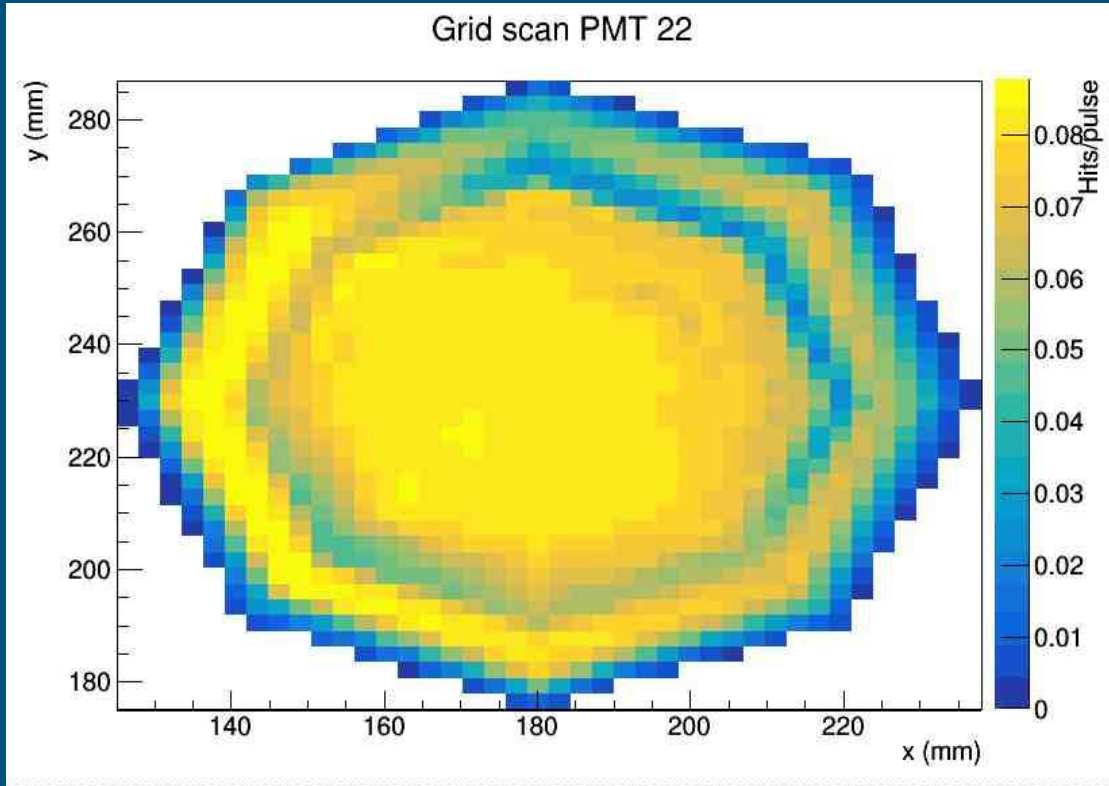


# PMT Gridscan

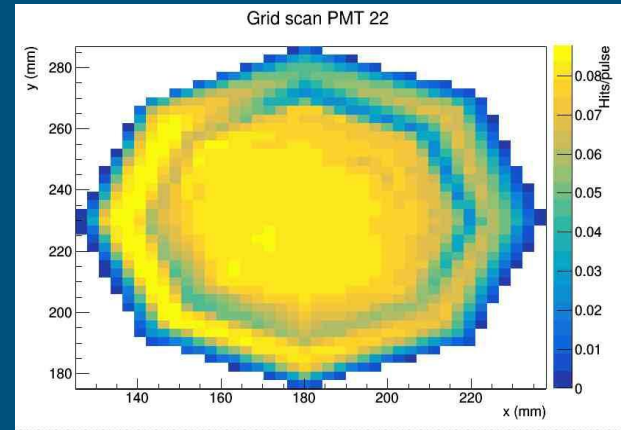
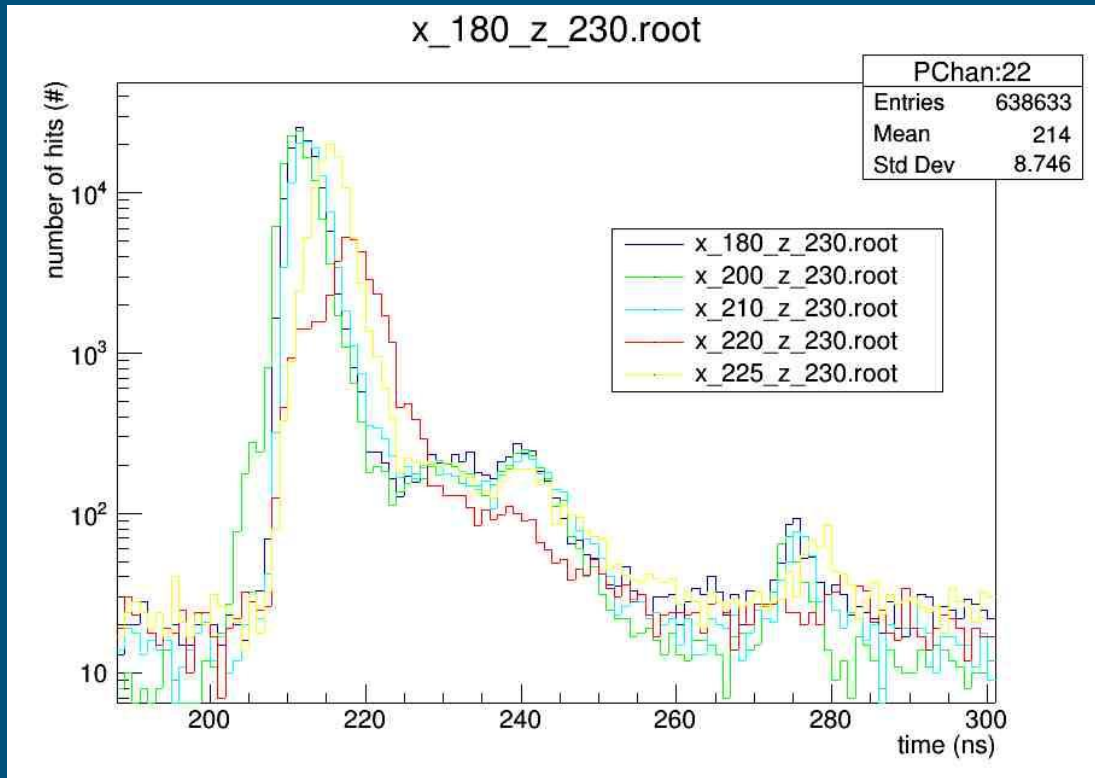
---

- 2D grid of a PMT
- Laser perpendicular with PMT
  - Theta = 0 of laser with optical axis PMT
- 4 diagonals of PMT scanned
- > 130 measurements

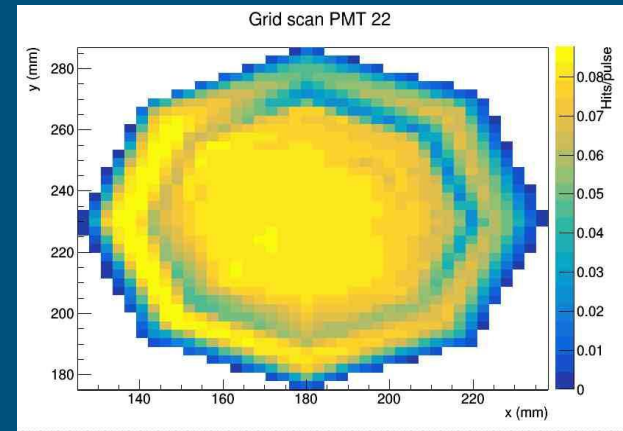
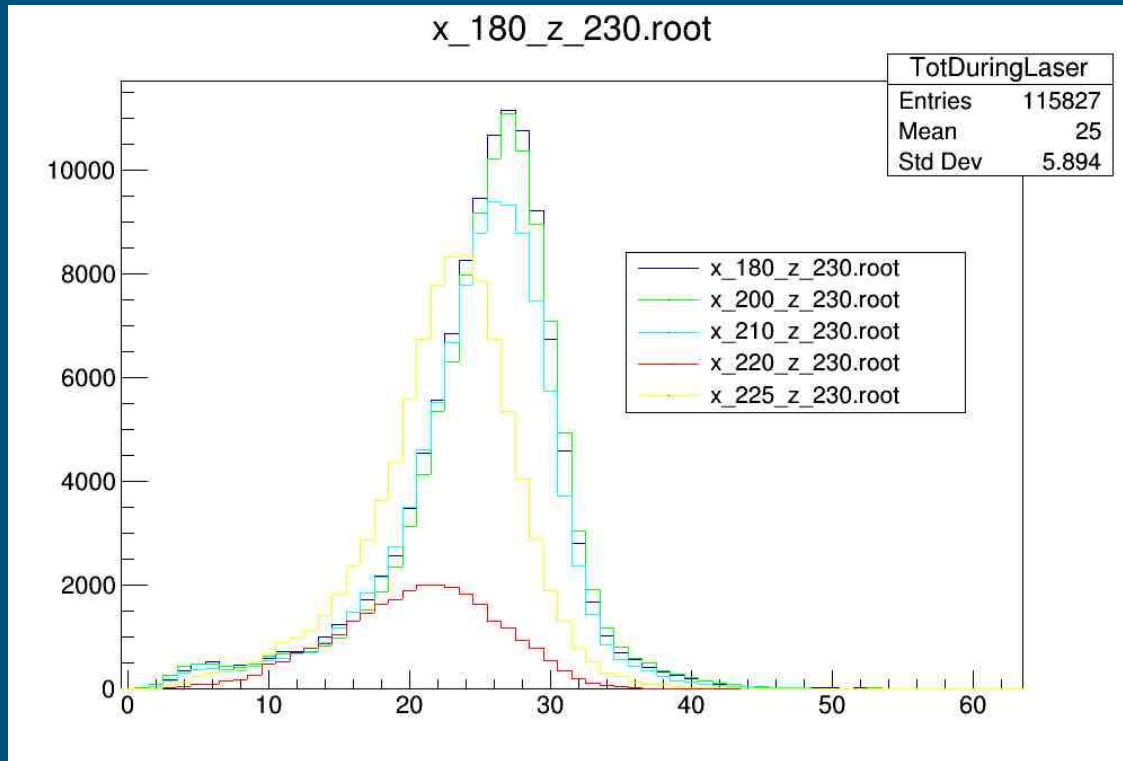
# Gridscan (Theta = 0)



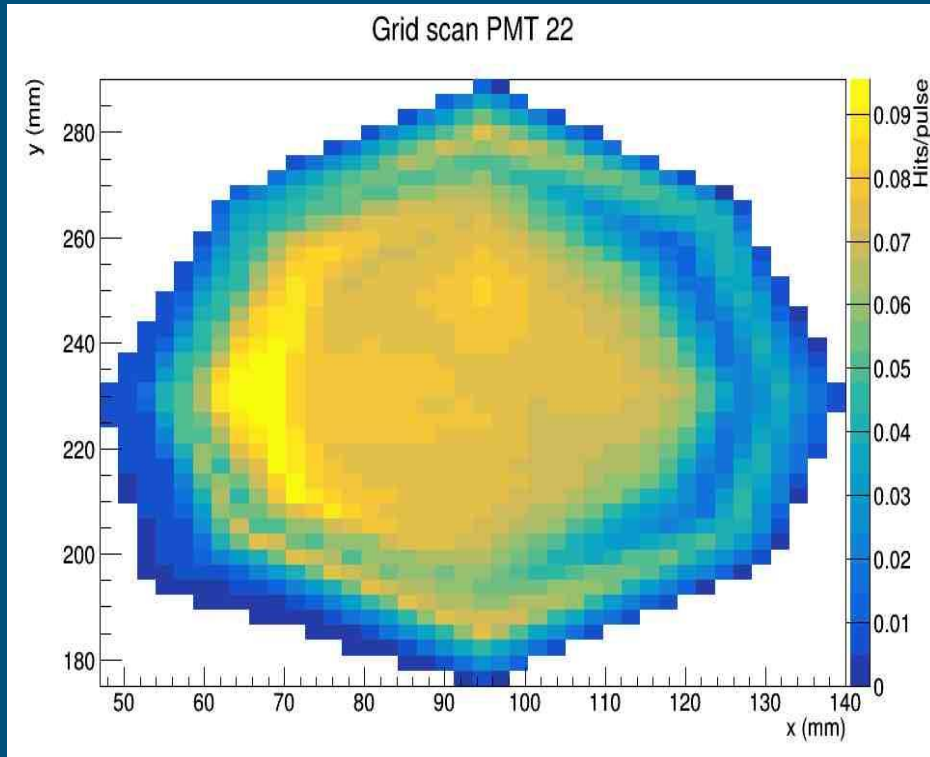
# Gridscan - Arrival Times (theta = 0)



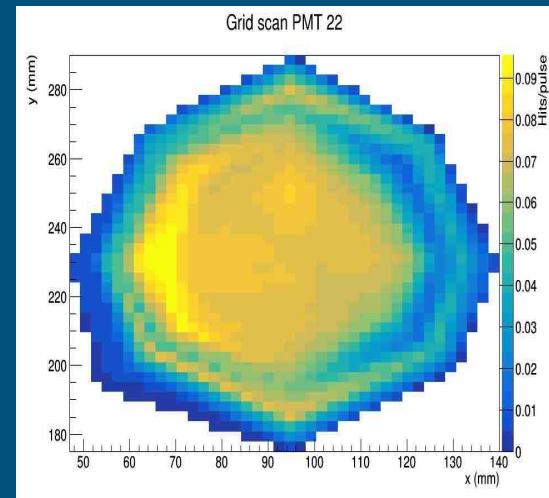
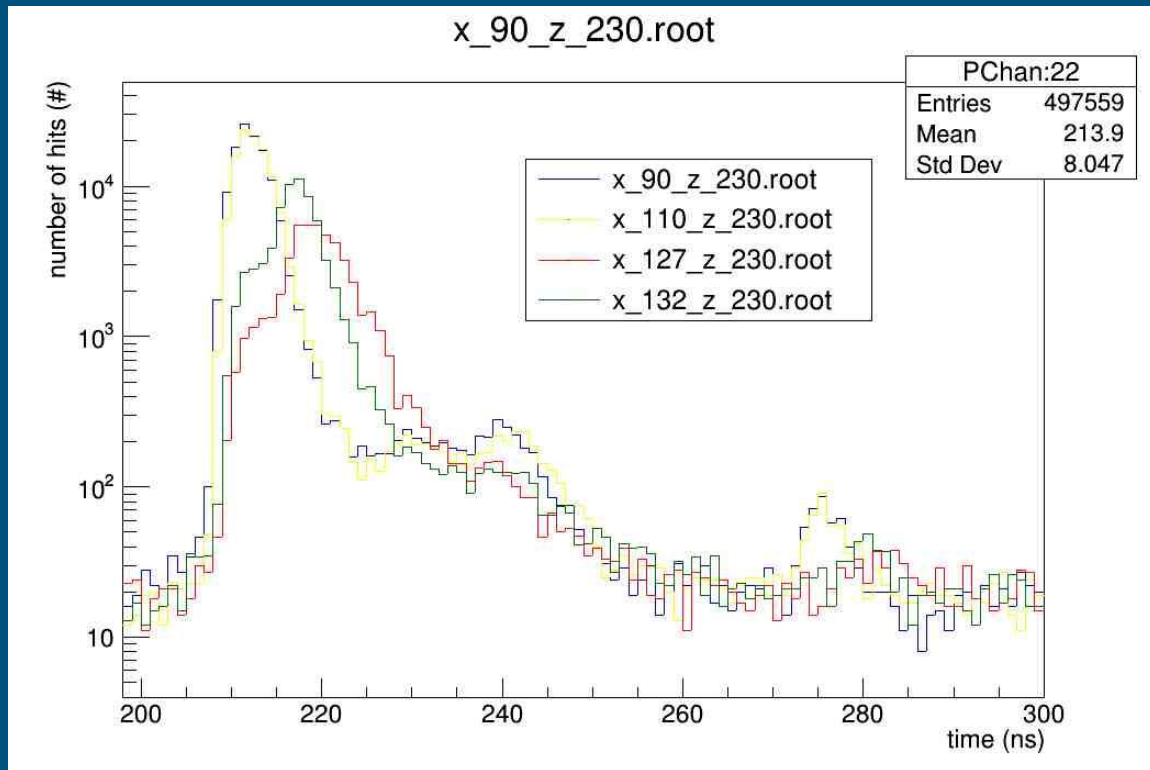
# Gridscan - ToT (theta = 0)



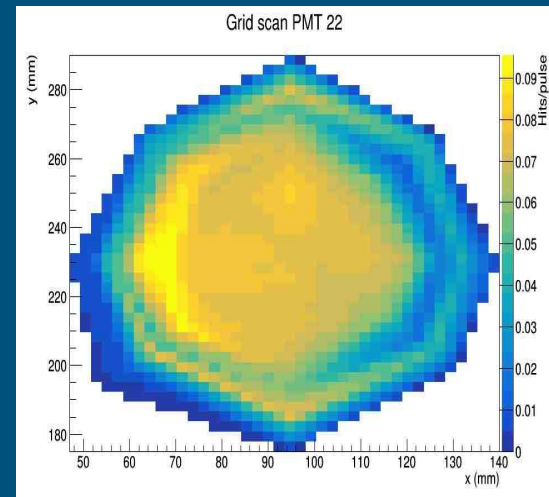
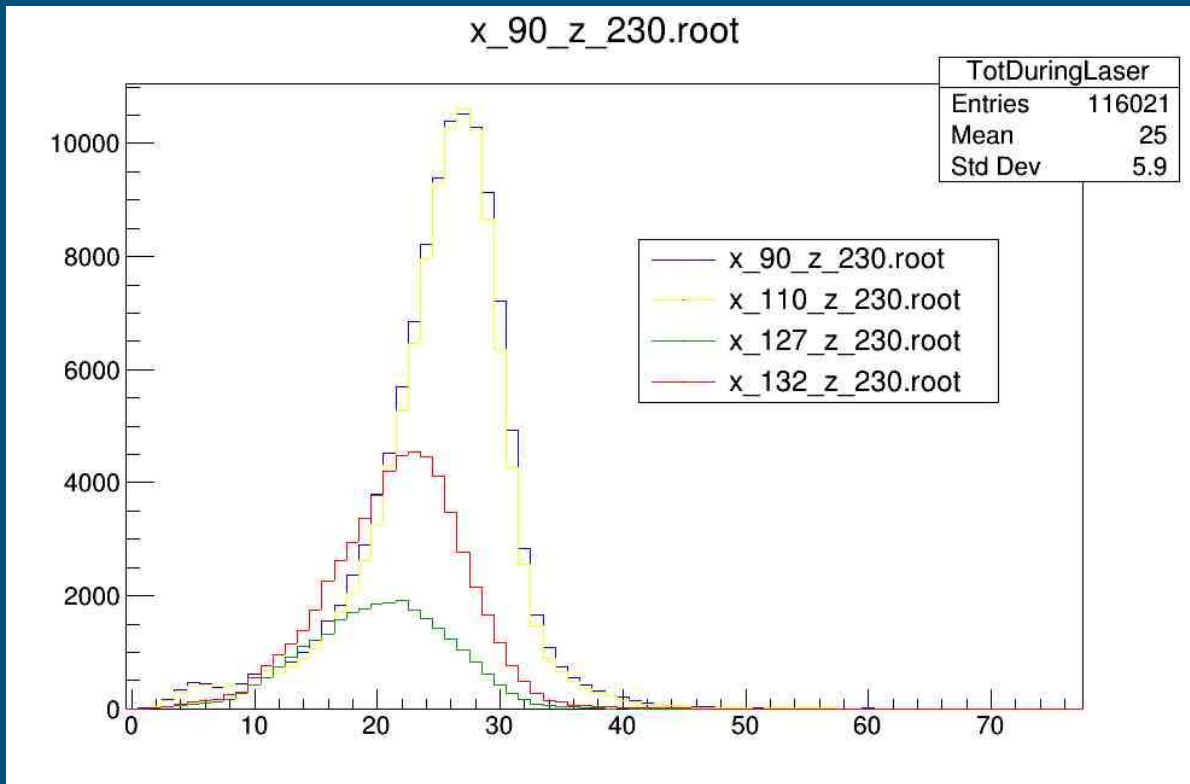
# Gridscan (Theta = 30 degrees)



# Gridscan - Arrival Times (theta = 30)



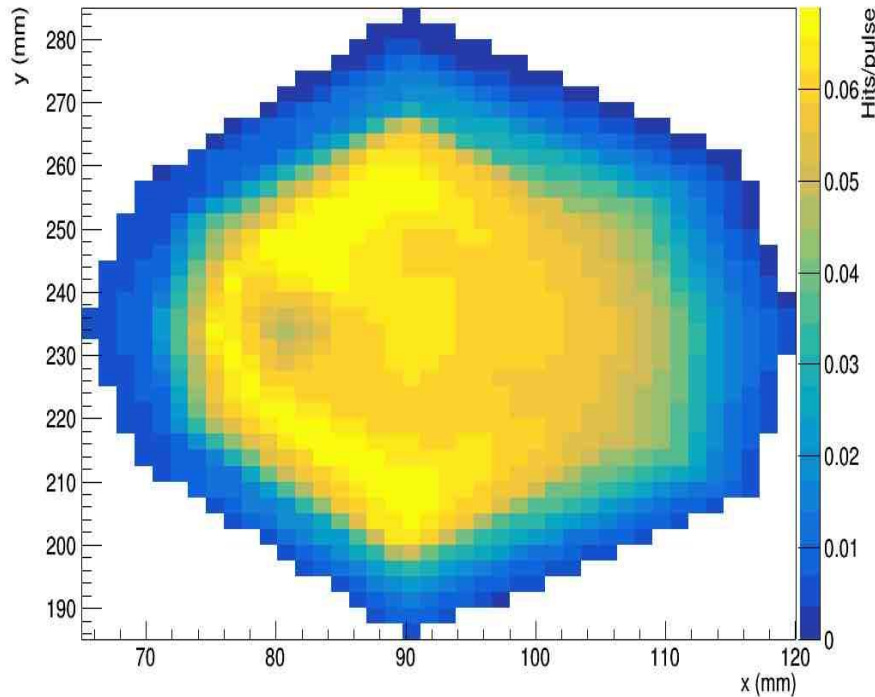
# Gridscan - ToT (theta = 30)





# Gridscan (Theta = 60 degrees)

Grid scan PMT 22



# Next steps

---

- Make the plots in their original shape
- Measure more angles
- Integrate heatmaps to get averaged efficiency for different angles
- Make acceptance plot!