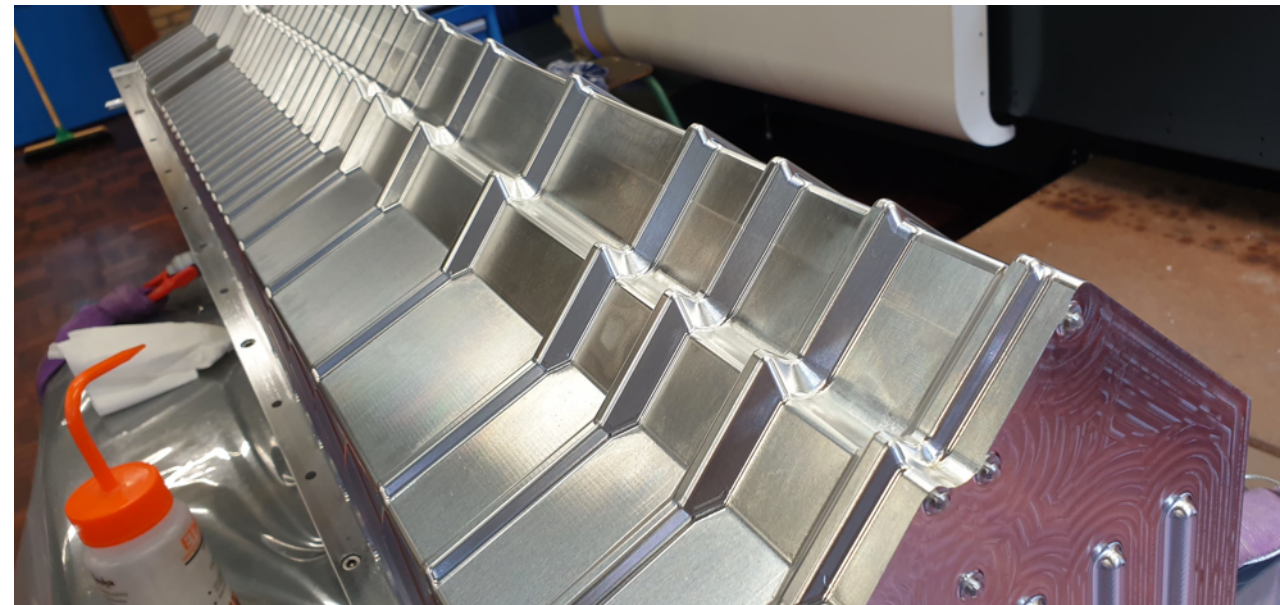


VELO RF box A3

- Milling finished end of September
- Leak tight!
- Fantastic achievement!
- 4 final boxes available.



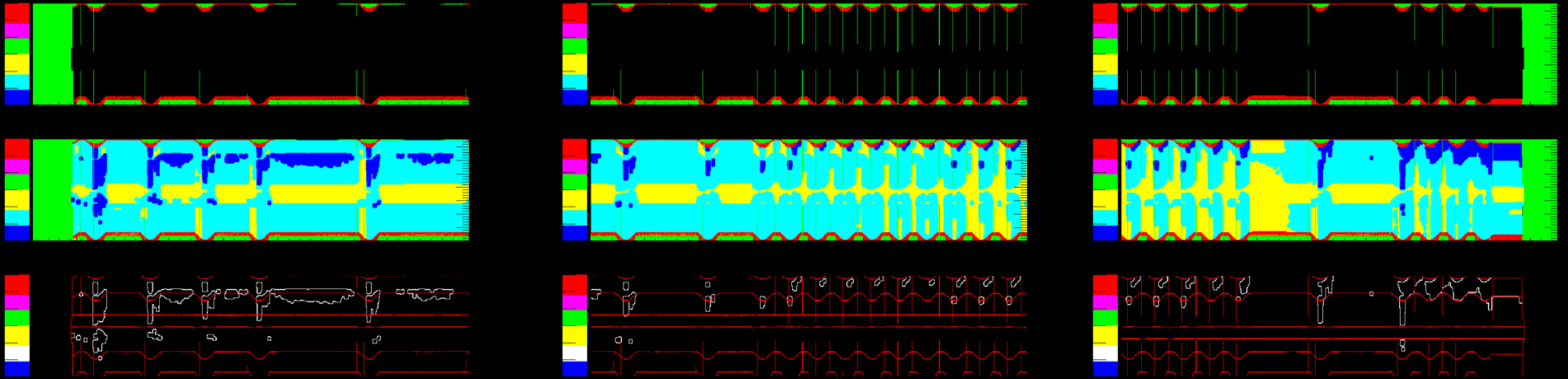
Kazu Akiba, Tjeerd Ketel, Krista de Roo, Willem Kuilman,
Wouter Hulsbergen, Berend Munneke, + ...

Boxes were transported on 6/oct, back on 12

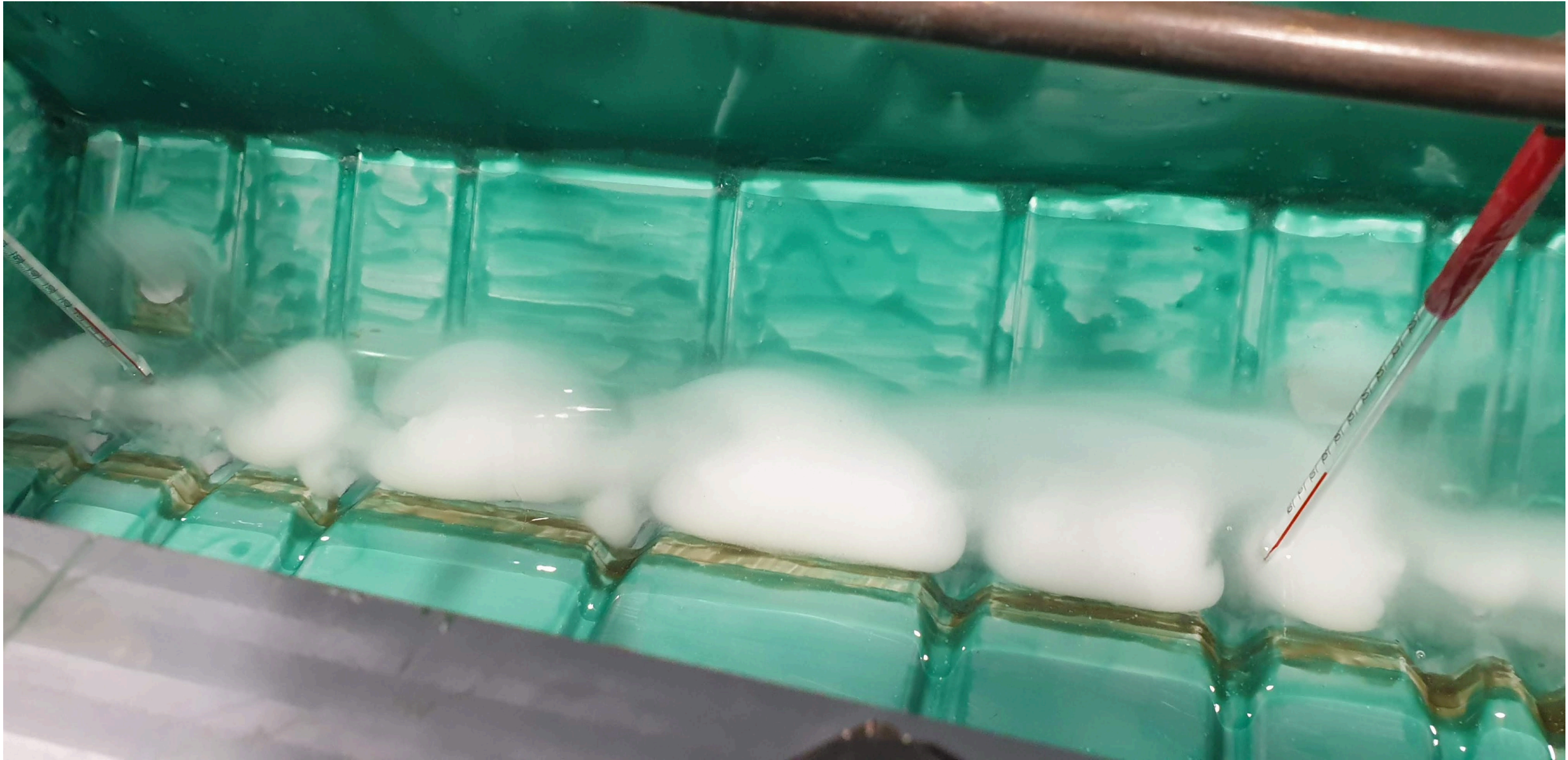


Kazu Akiba, Tjeerd Ketel, Krista de Roo, Willem Kuilman,
Wouter Hulsbergen, Berend Munneke, + ...

Contours for C2 and A2 were painted at Nikhef. (blue spots are thinnest parts – $150\mu\text{m} < t < 200\mu\text{m}$)



NaOH etching



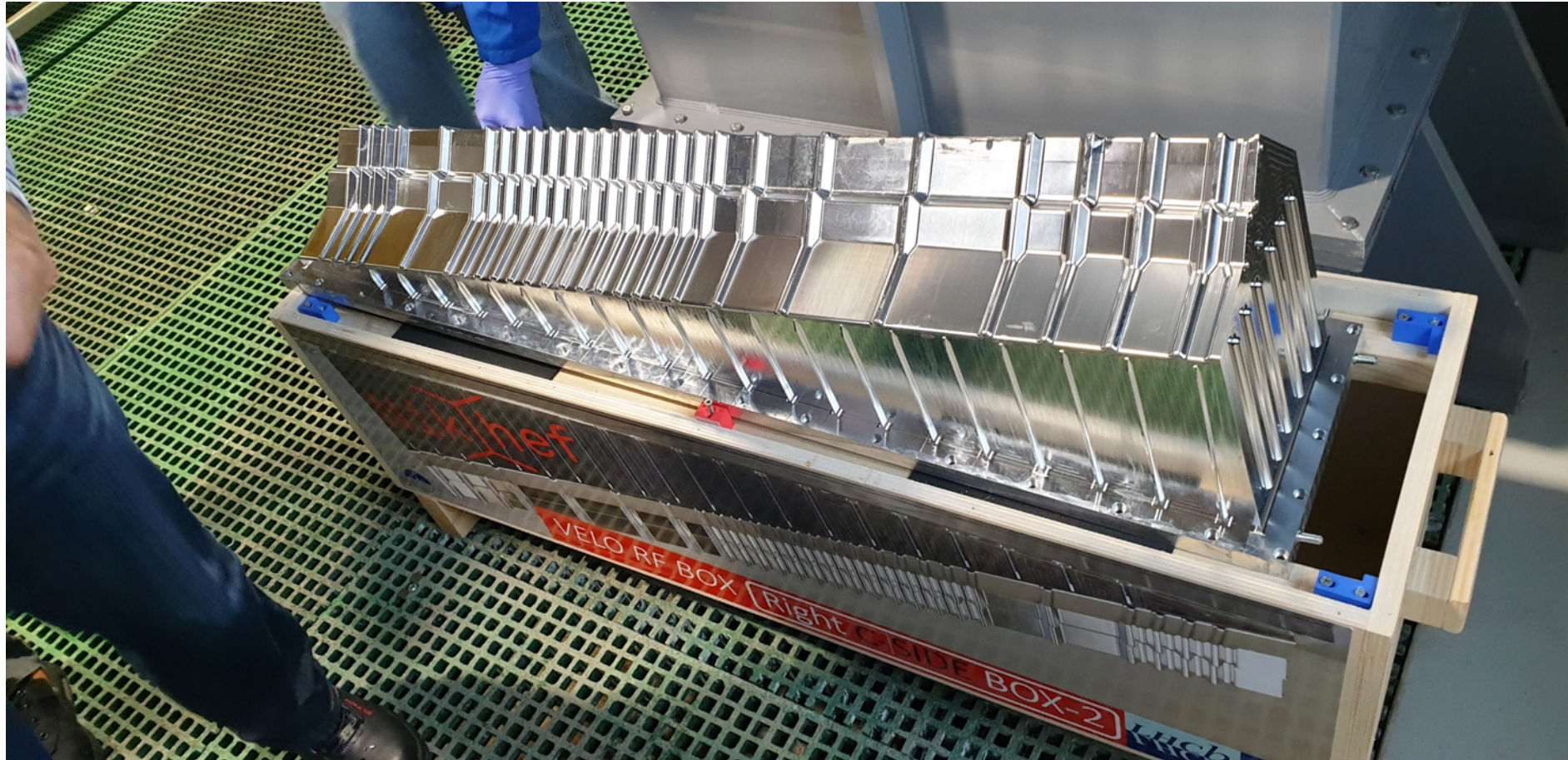
Adding 2nd mask



Kazu Akiba, Tjeerd Ketel, Krista de Roo, Willem Kuilman,
Wouter Huisbergen, Berend Munneke, + ...



C2 etched (and now already with paint removed).



Kazu Akiba, Tjeerd Ketel, Krista de Roo, Willem Kuilman,
Wouter Hulsbergen, Berend Munneke, + ...

RF production/measuring schedule

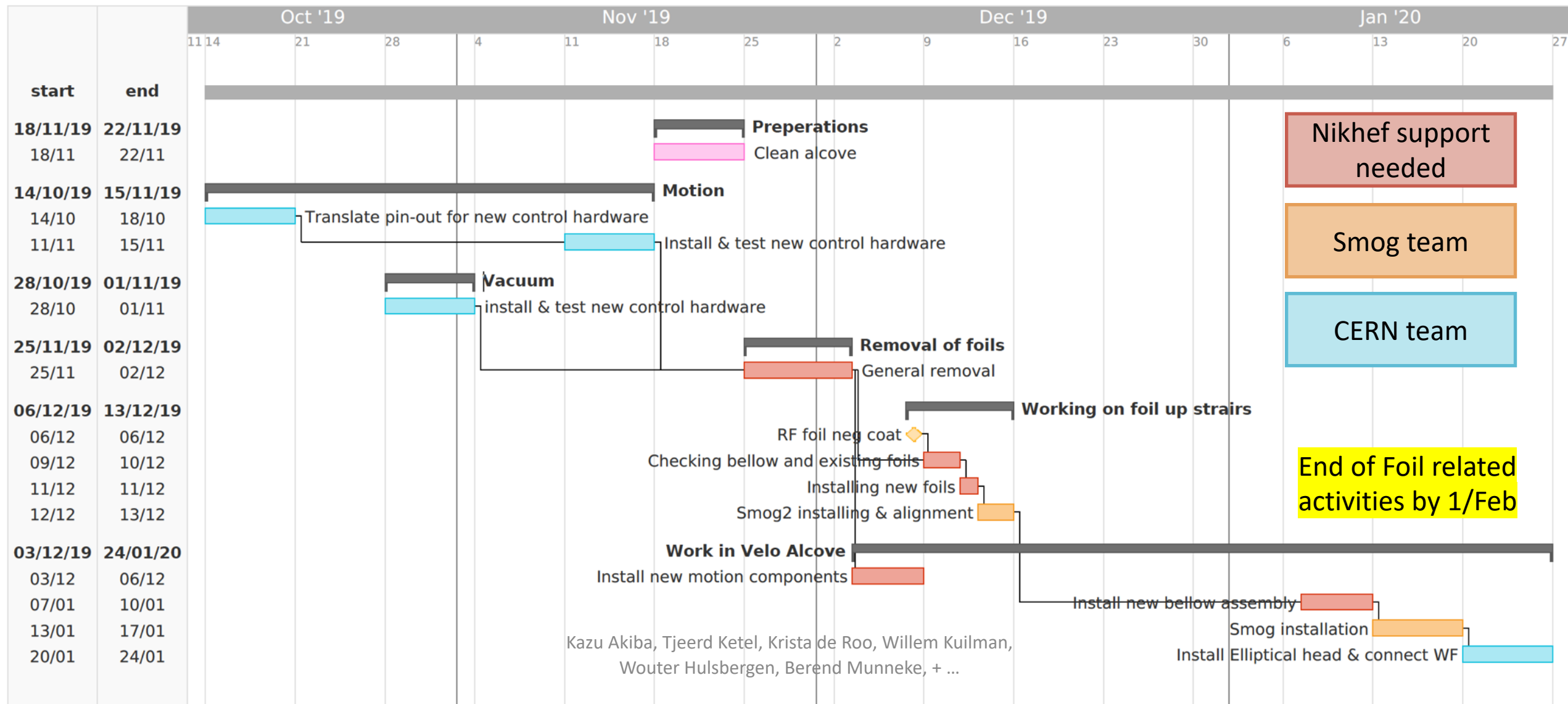
Note non linear time. **Mondays**

	6-Oct	7-Oct	8-Oct	9-Oct	10-Oct	11-Oct	12-Oct	15-Oct	16-Oct	17-Oct	18-Oct	21-Oct	28-Oct	1-Nov	4-Nov	6-Nov	7-Nov	12-Nov	15-Nov	18-Nov	20-Nov	25-Nov	2-Dec	9-Dec	16-Dec	20-Dec	6-Jan	13-Jan	20-Jan	
A2	transport to CERN	paint	paint	etch	etch	clean	transport to Nikhef			leak test	leak test			MD 3D Measurements	MD 3D Measurements	MD 3D Measurements	MD 3D Measurements	MD 3D Measurements	torlon Coat	pt100 glue	transport to CERN	Neg coat	Neg coat	Ready to install						
C2	transport to CERN	paint	etch	etch	clean	clean	transport to Nikhef	leak test	leak test	MD 3D Measurements	MD 3D Measurements	MD 3D Measurements	MD 3D Measurements	torlon Coat	pt100 glue	transport to CERN	transport to CERN	Neg coat	Neg coat	Neg coat	Neg coat	Ready to install								
A3	out of mold	out of mold	leak test	leak test	MD 3D Measurements	MD 3D Measurements	MD 3D Measurements	MD 3D Measurements	MD 3D Measurements							torlon Coat	pt100 glue				transport to CERN				Neg coat	Neg coat	Ready to install			
C1												torlon Coat	pt100 glue								transport to CERN						Neg coat	Neg coat	Ready to install	

End of Production phase

Kazu Akiba, Tjeerd Ketel, Krista de Roo, Willem Kuilman,
Wouter Hulsbergen, Berend Munneke, + ...

Installation Planning



Summary

- Foil production finished.
- Installation planned in the next few months.
 - Nikhef Participation is highly appreciated.
- Work on RF-boxes at Nikhef to be over by end of November
- Installation of boxes finished by end of January.
 - Final step is the detector insertion.