

shower

Tino Michael

National Institute for Subatomic Physics, Amsterdam

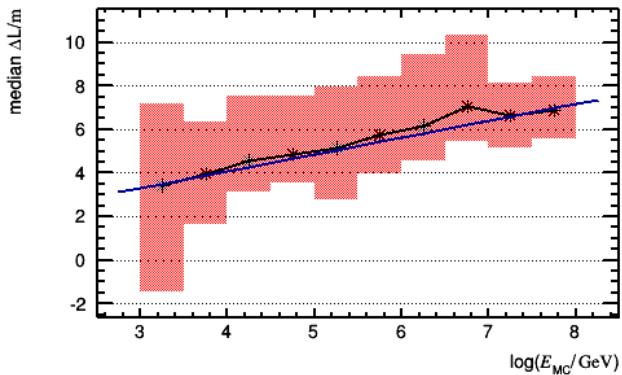
March 10, 2015



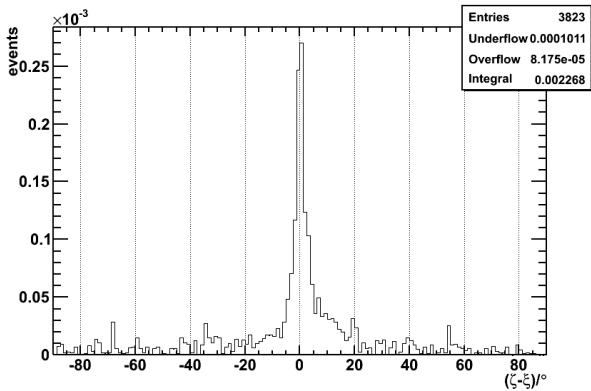
- no longer set with biggest number of compatible hits
- ... but set with biggest associated charge
- *rightarrow* slight improvement in position reconstruction

longitudinal position offset

comparing no longer to maximum of shower profile but *mean*

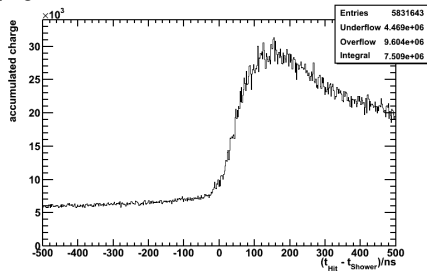


Aa-Angular-Error minus TANTRA-Angular-Error (only cut: $E_{MC} > 1$ TeV)

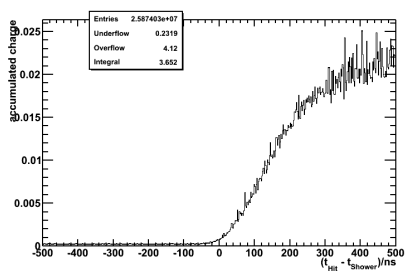


Hits w.r.t. Shower Time

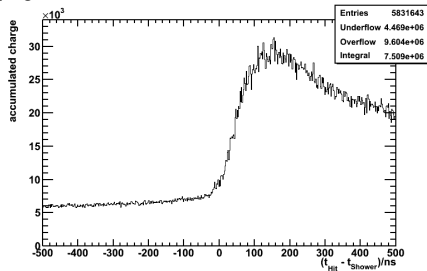
mupage



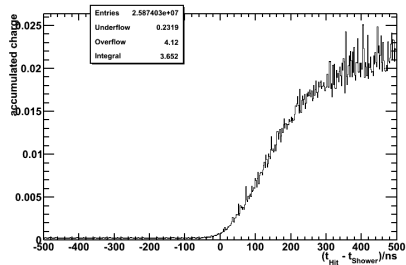
nueCC



mupage



nueCC

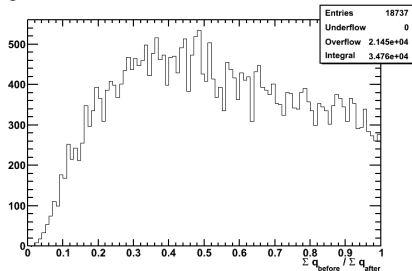


$$\sum q_{\text{before}} := \sum_{t=-500\text{ns}}^{t=-100\text{ns}} q_t$$

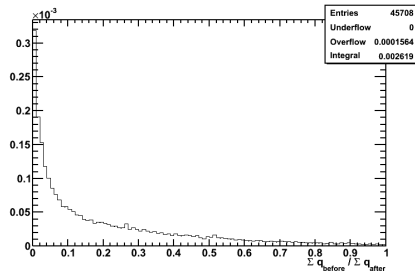
$$\sum q_{\text{after}} := \sum_{t=300\text{ns}}^{t=500\text{ns}} q_t$$

charge before/after Shower Time

mupage



nueCC



$$\Sigma q_{\text{before}} := \Sigma_{t=-500\text{ns}}^{t=-100\text{ns}} q_t$$

$$\Sigma q_{\text{after}} := \Sigma_{t=300\text{ns}}^{t=500\text{ns}} q_t$$