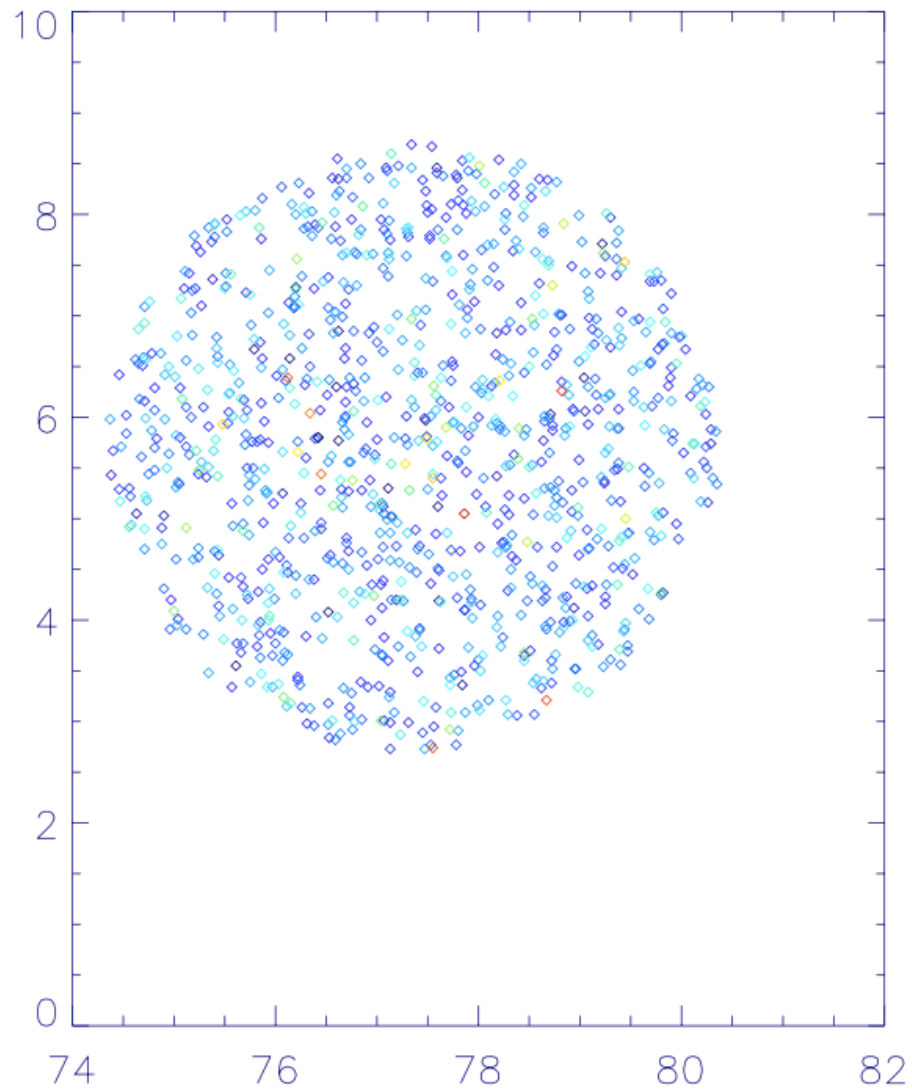
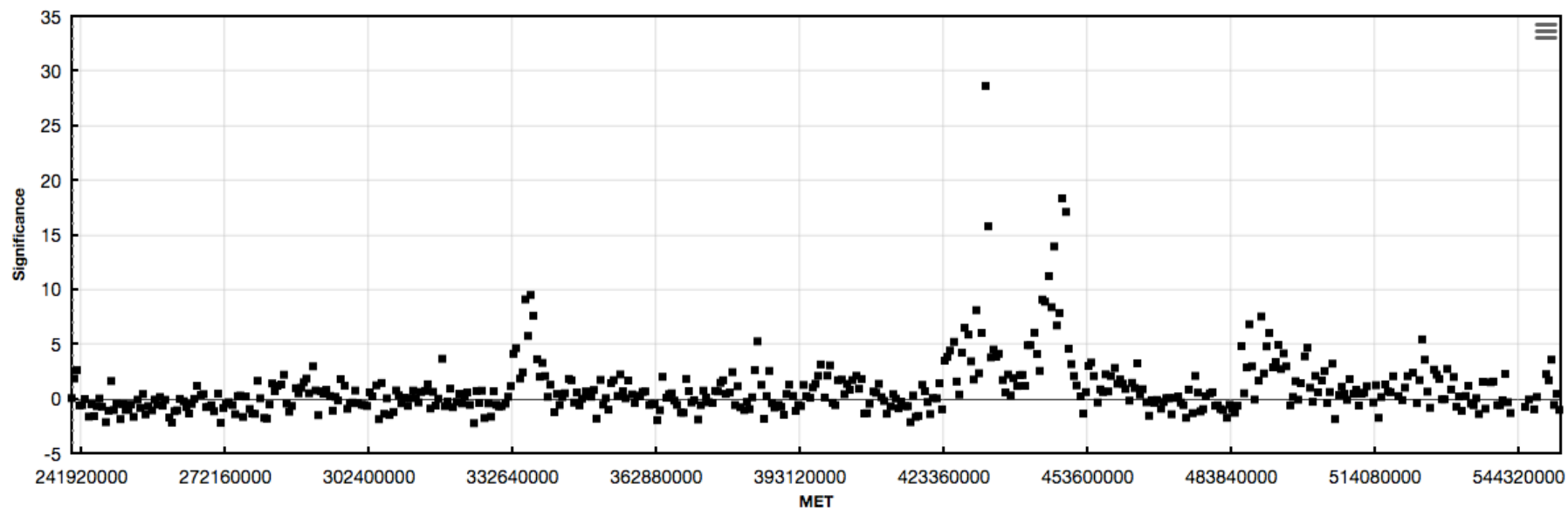
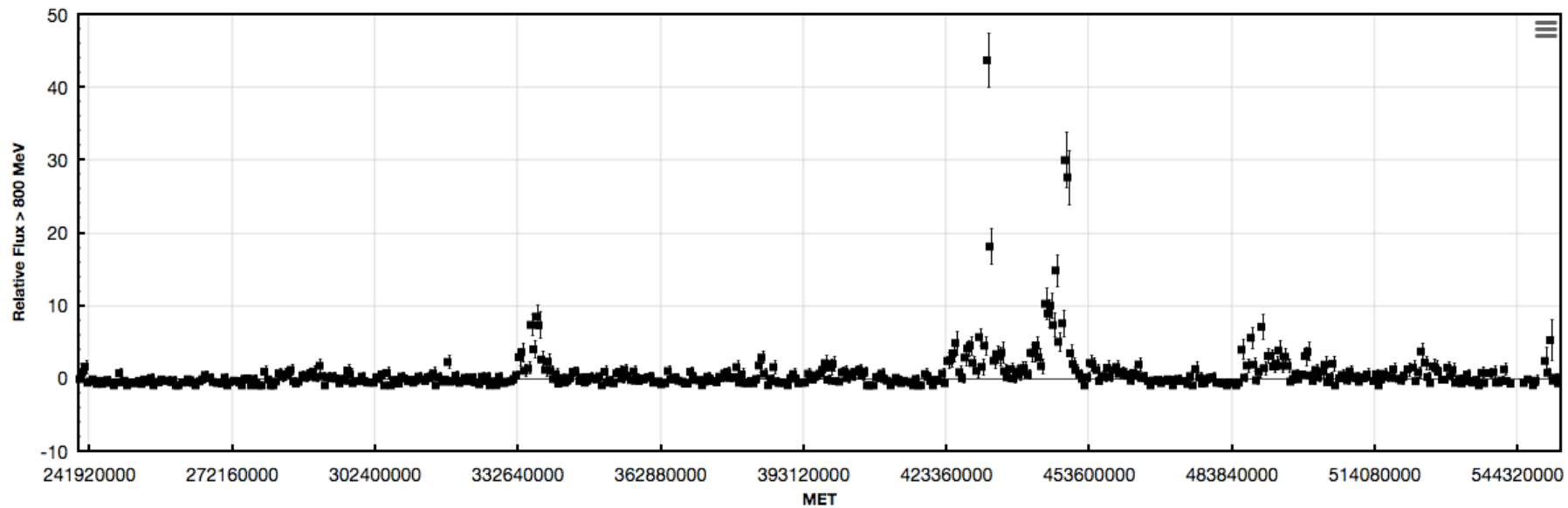
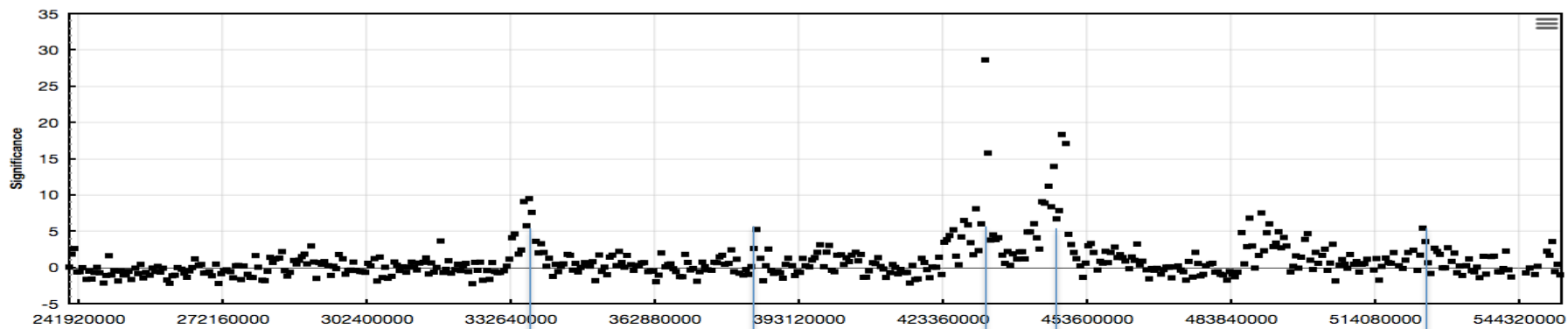
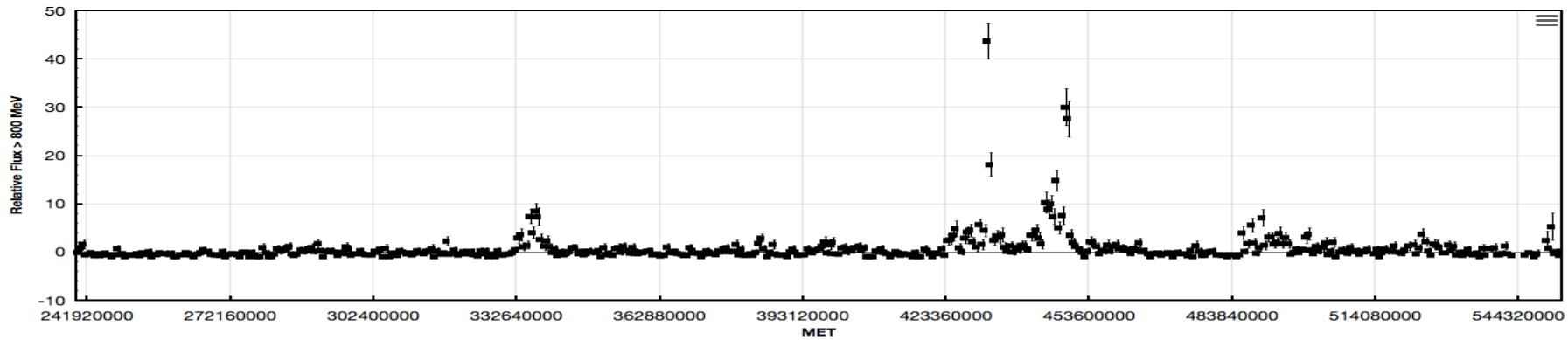


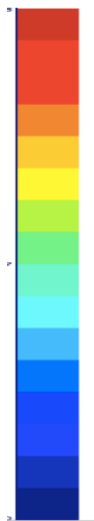
# IceCube IC86 events around TXS



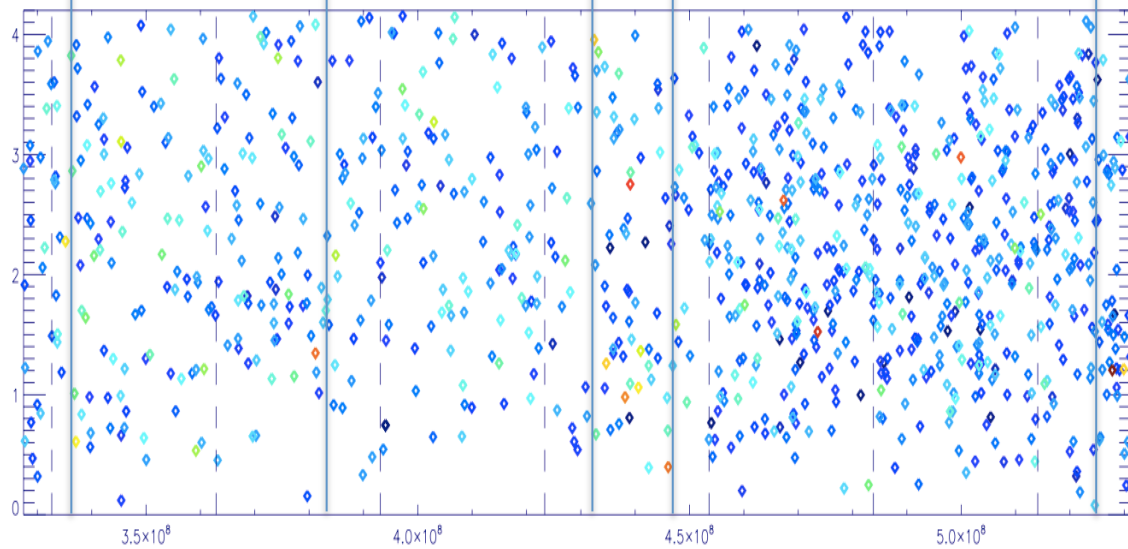


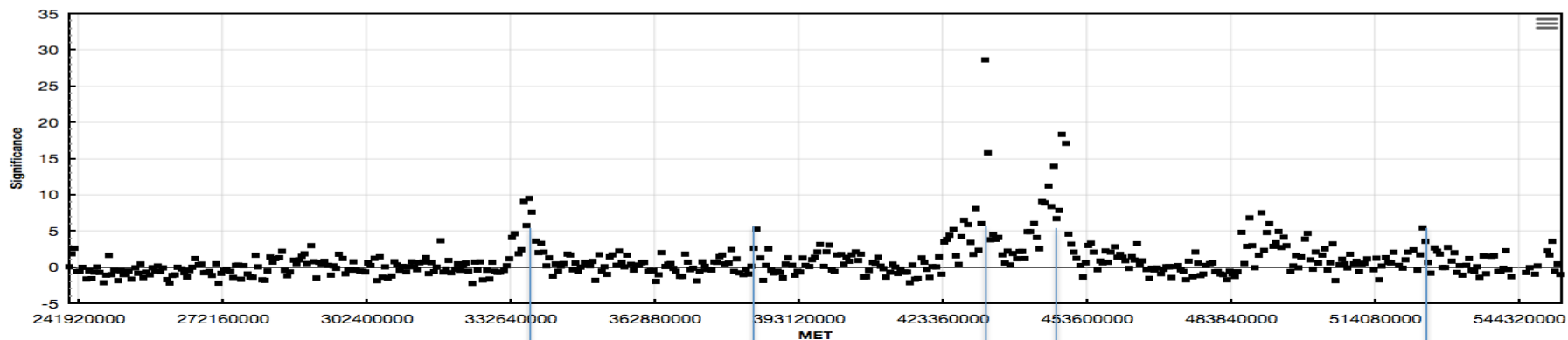
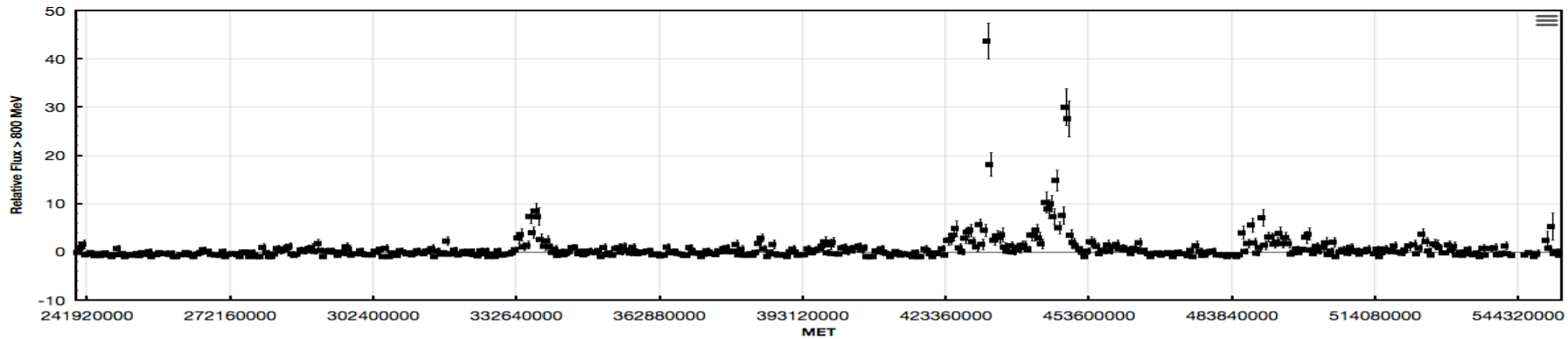


4.7

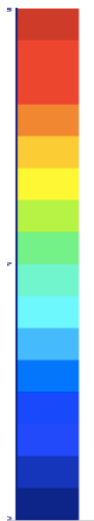


2.4

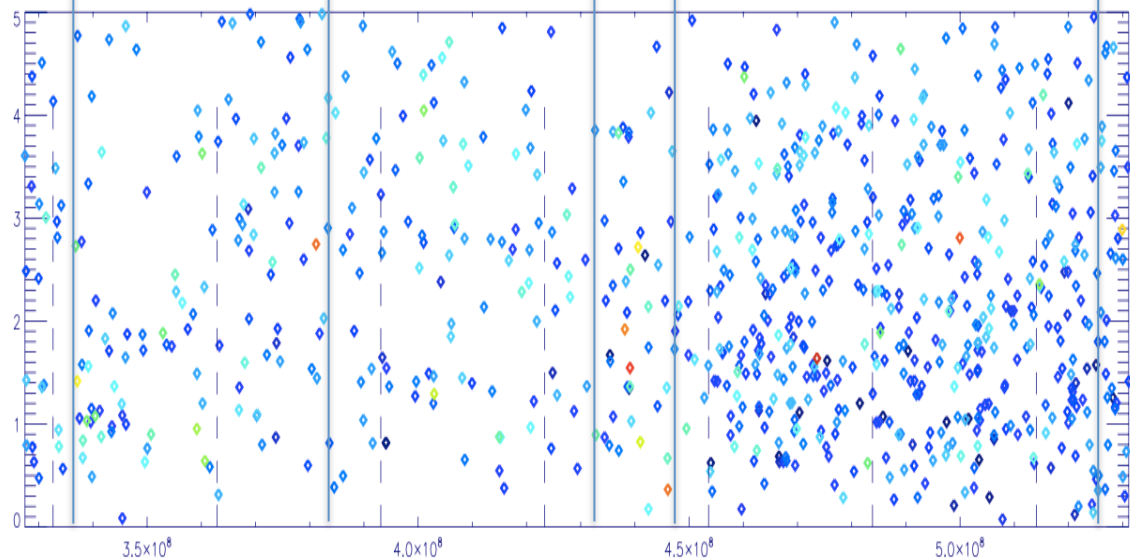


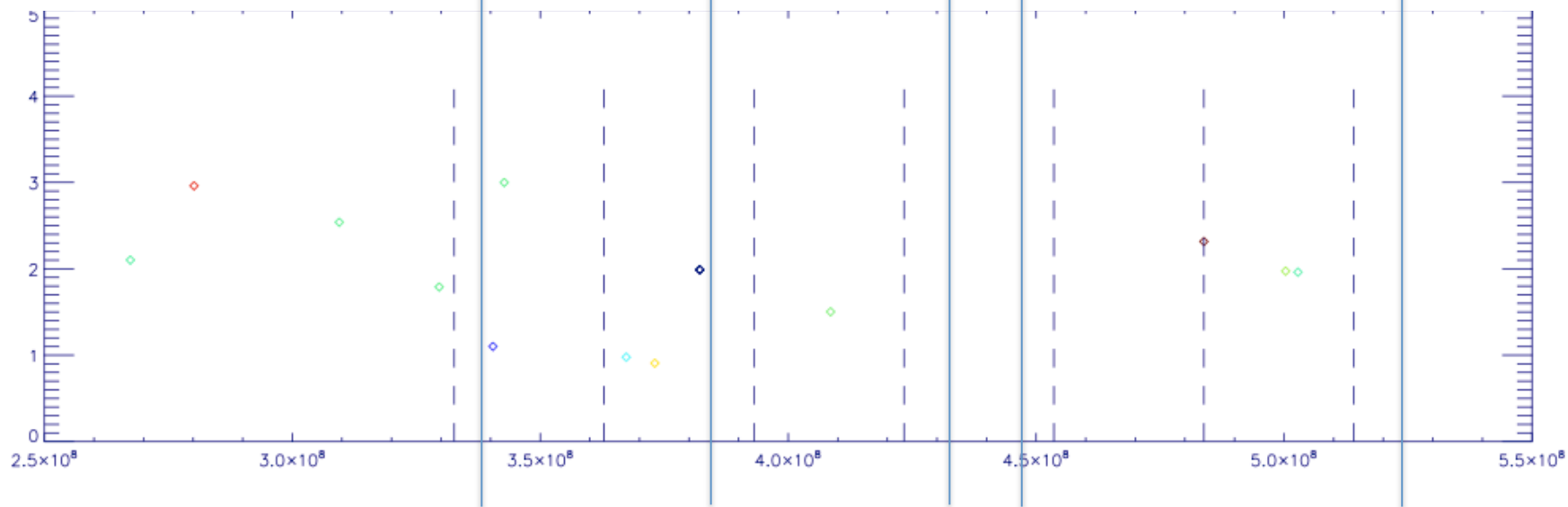
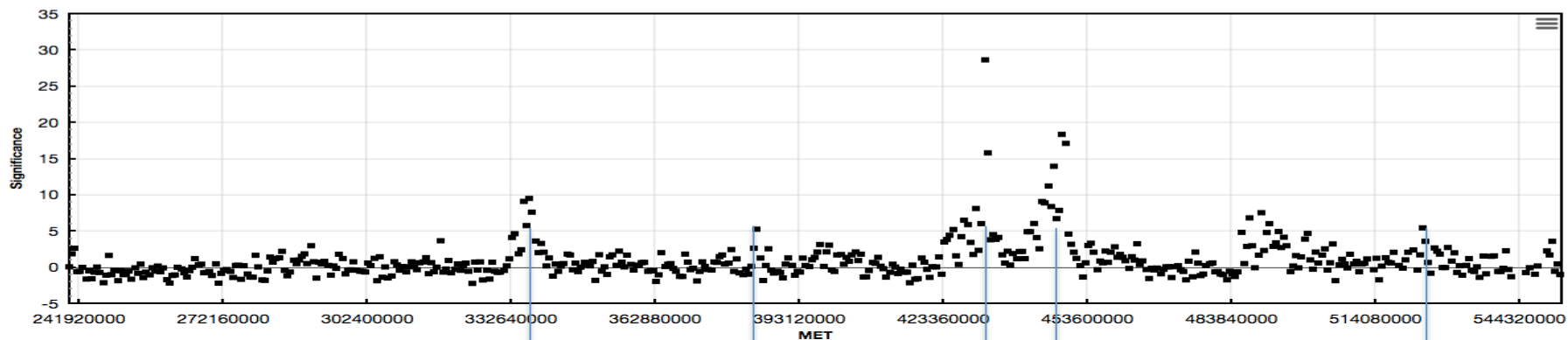
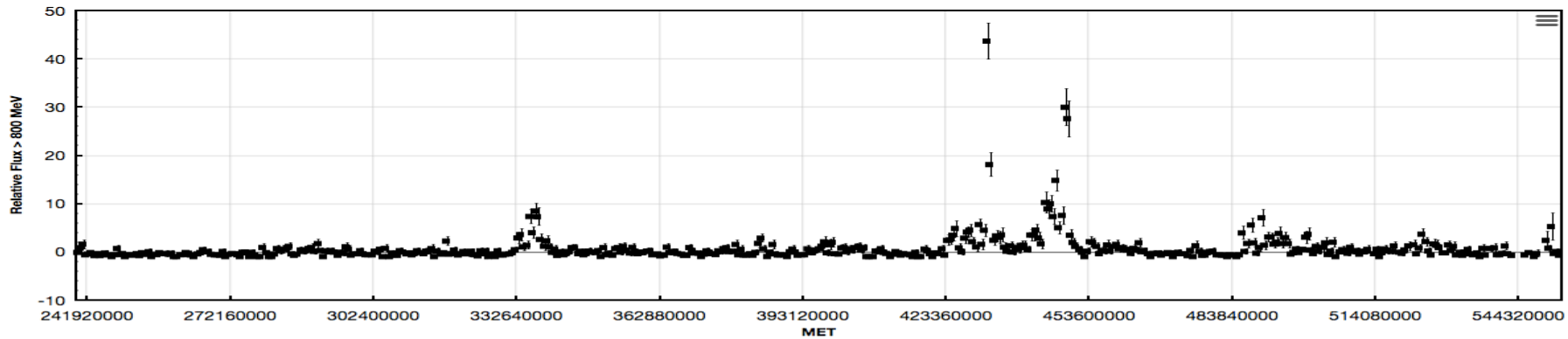


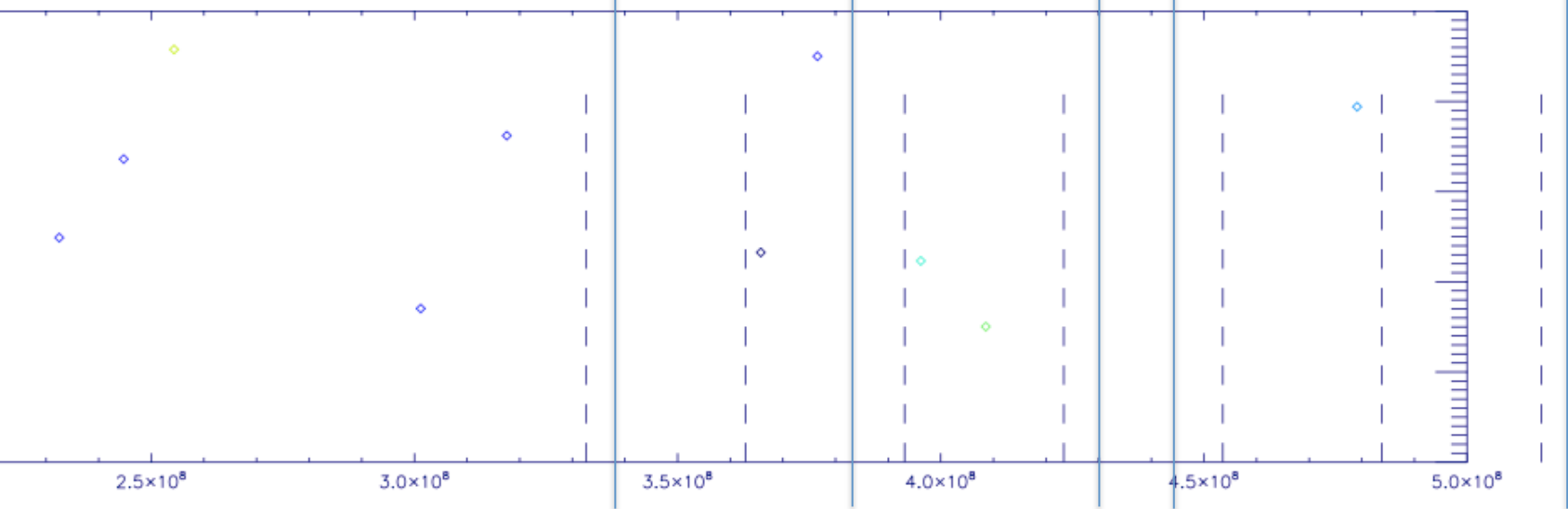
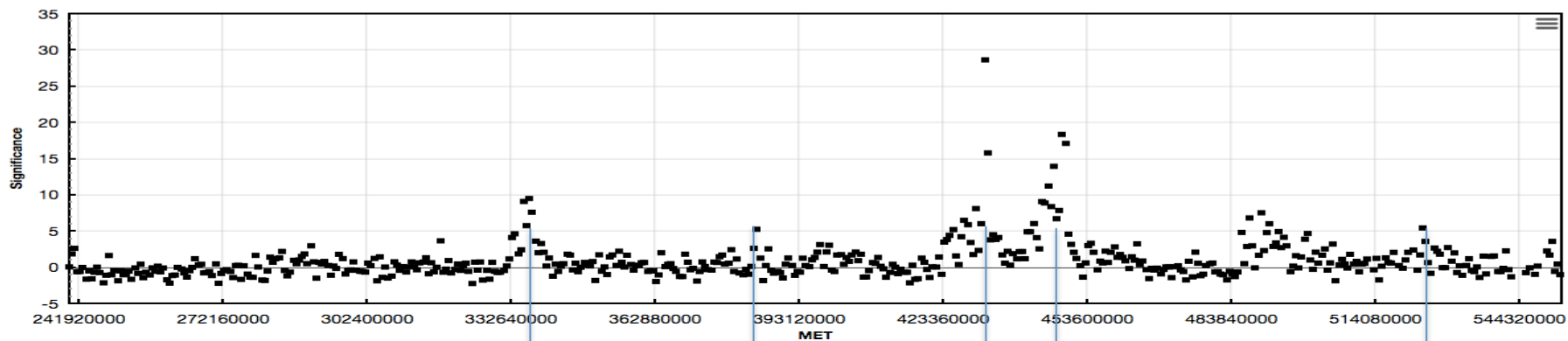
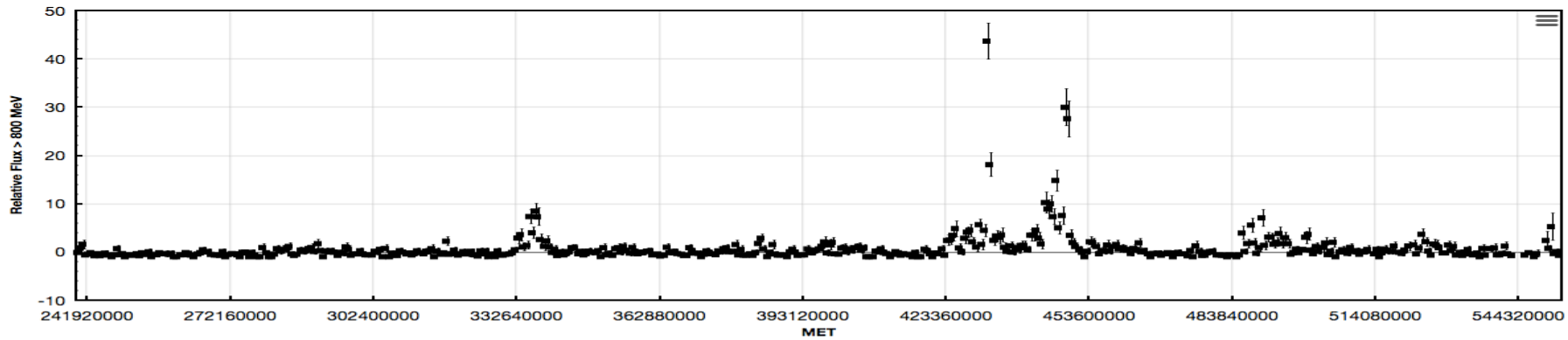
4.7



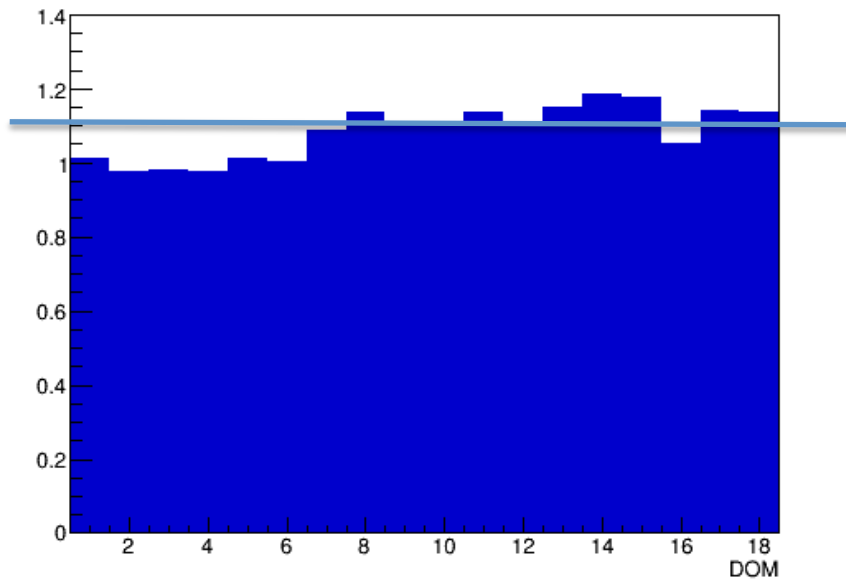
2.4





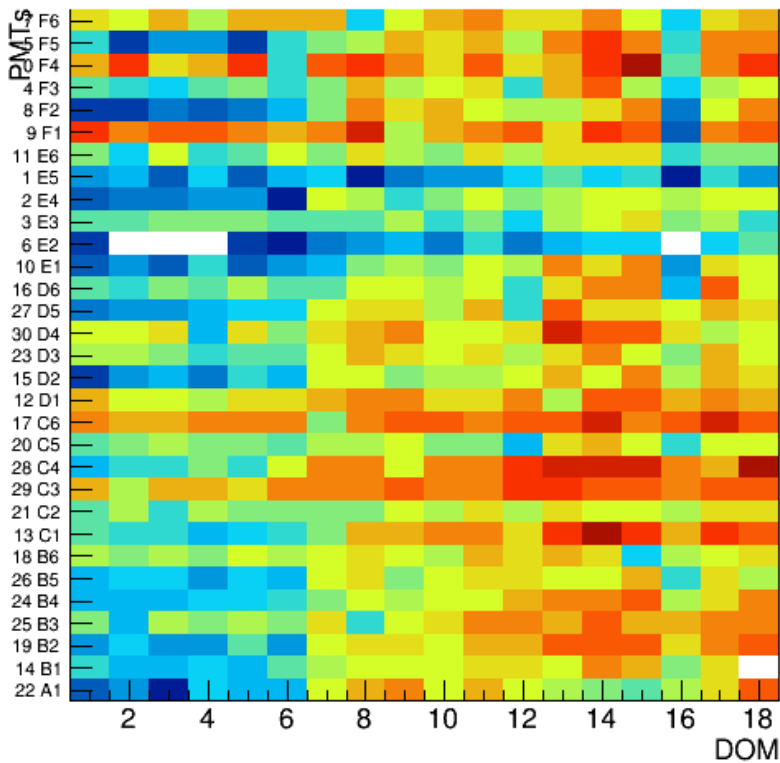


QE

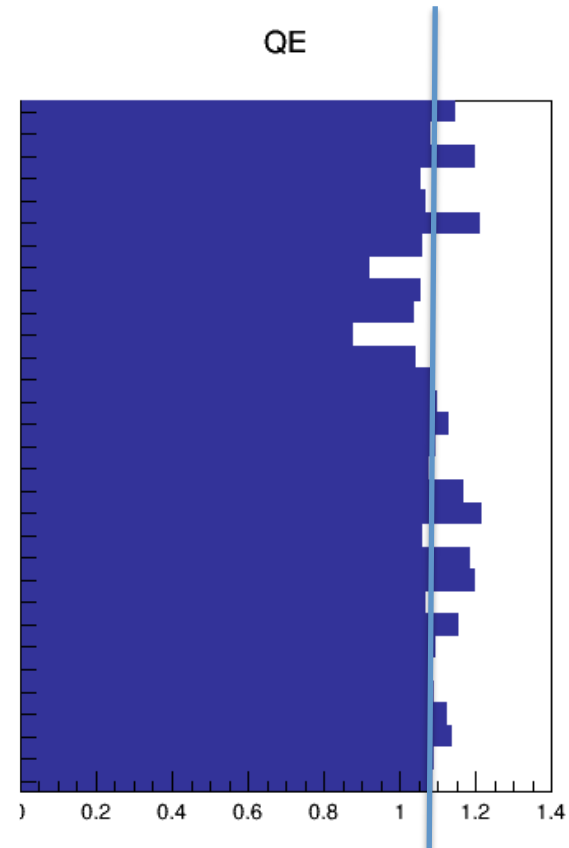


K40 efficiency  
Projections show median

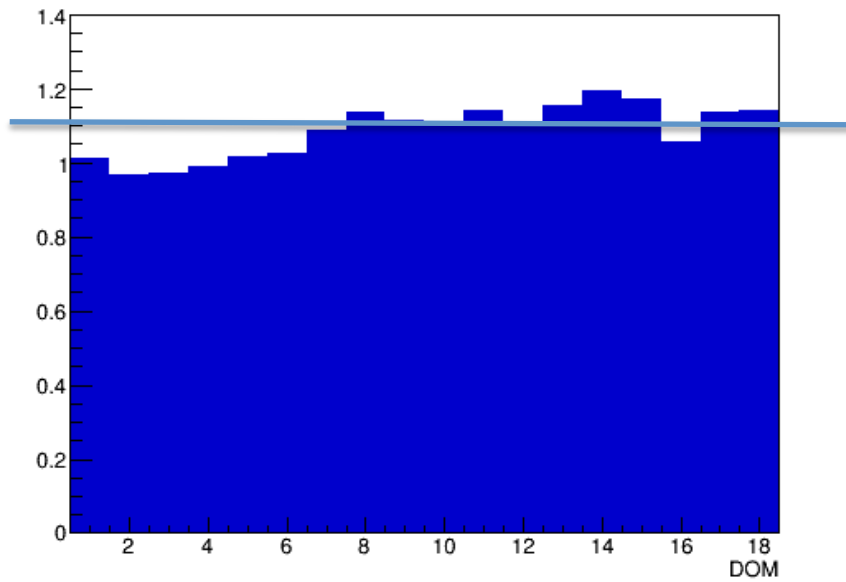
ORCA run 3104  
Color scale 0.8-1.4



QE

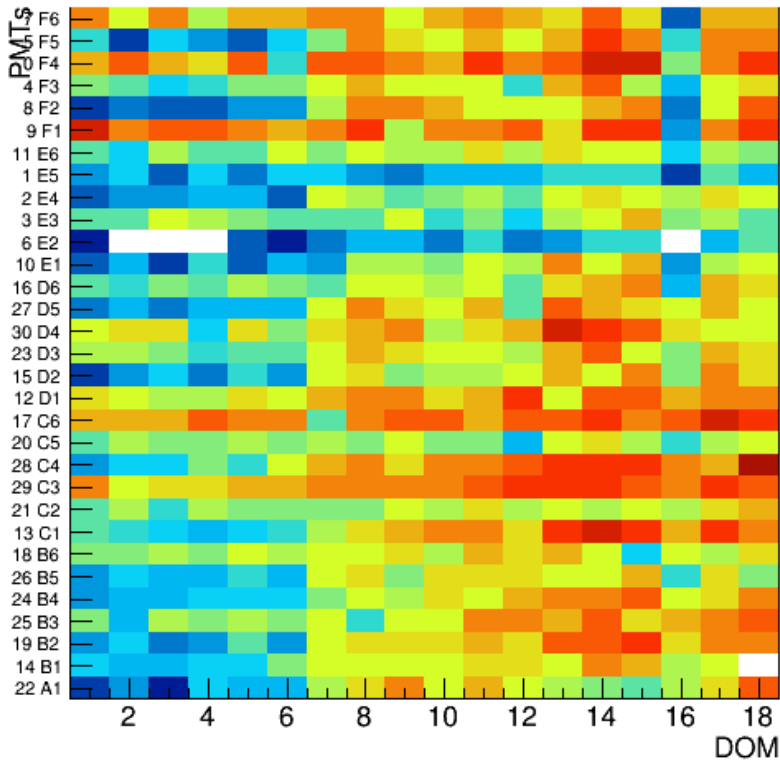


QE

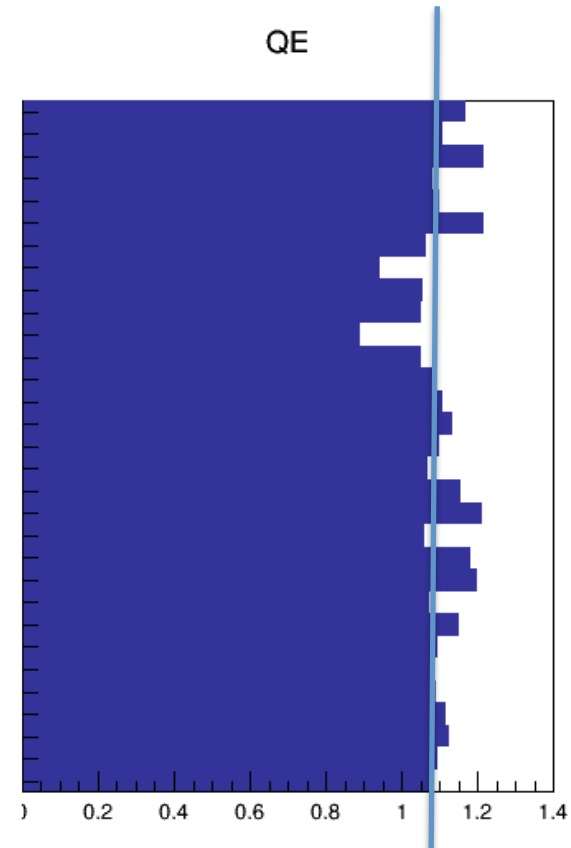


K40 efficiency  
Projections show median

ORCA run 3214  
Color scale 0.8-1.4

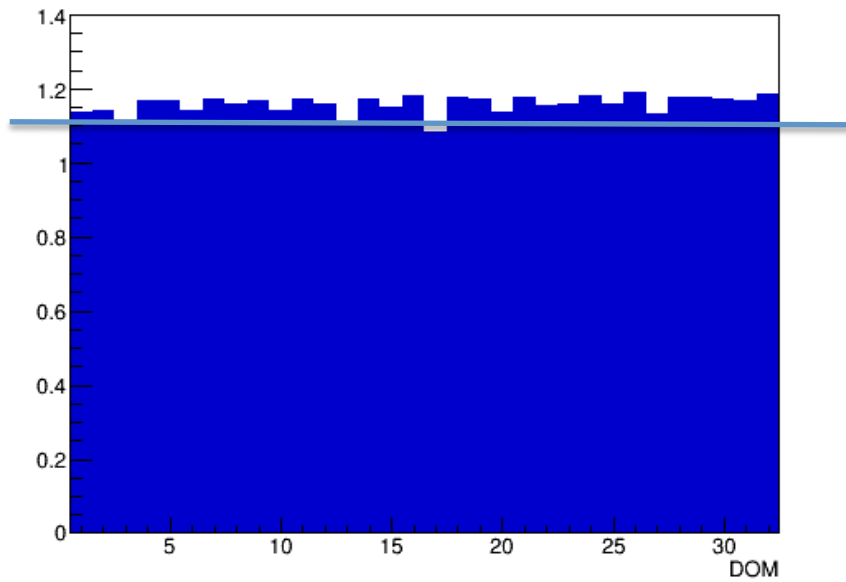


QE



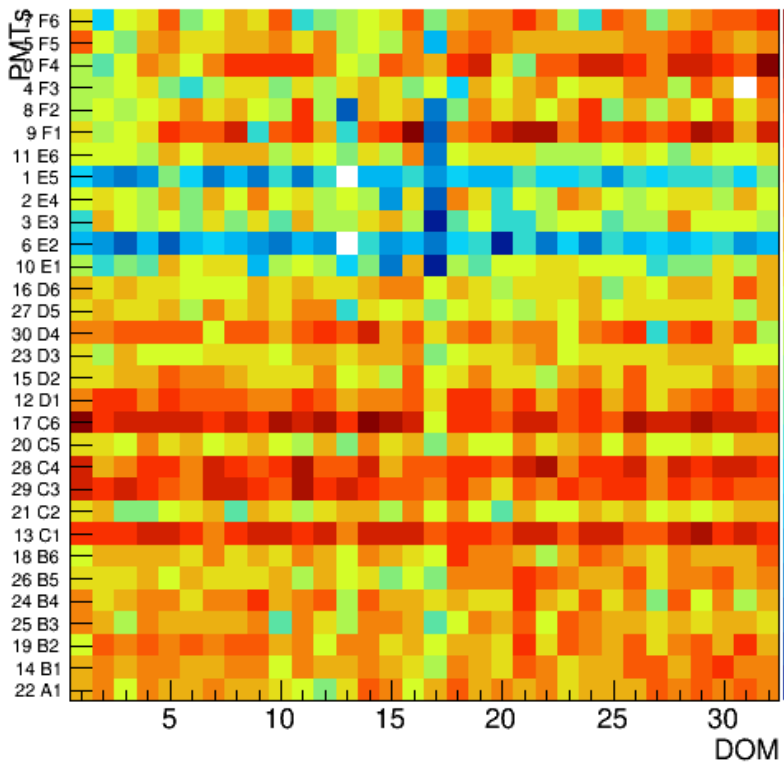


QE

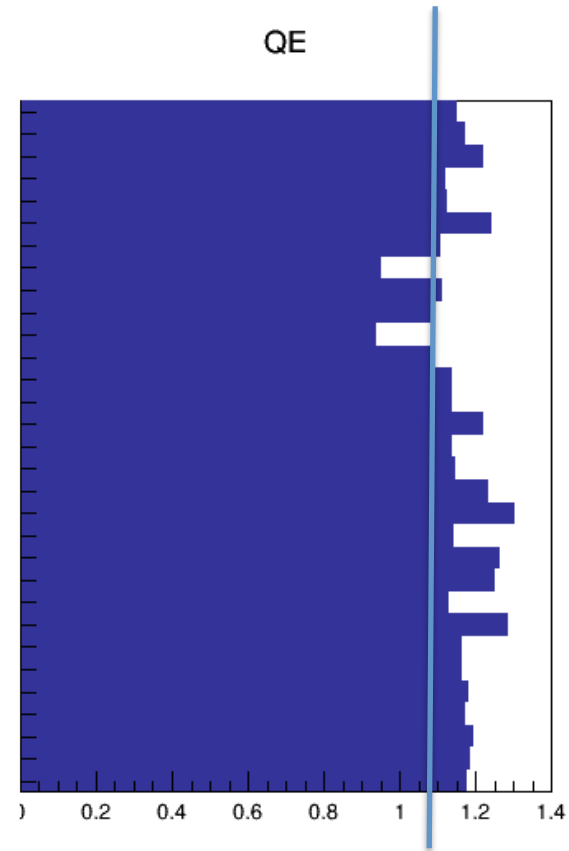


K40 efficiency  
Projections show median

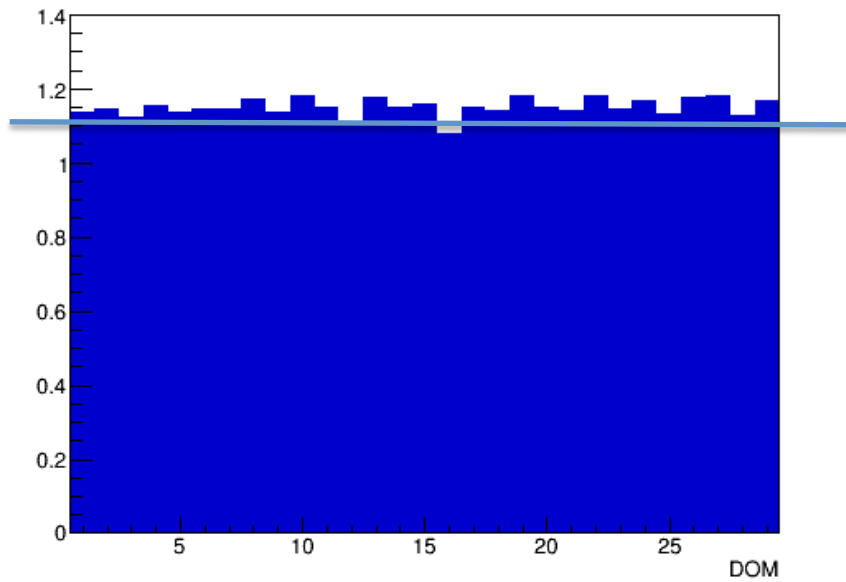
ARCA run 5045  
Color scale 0.8-1.4



QE

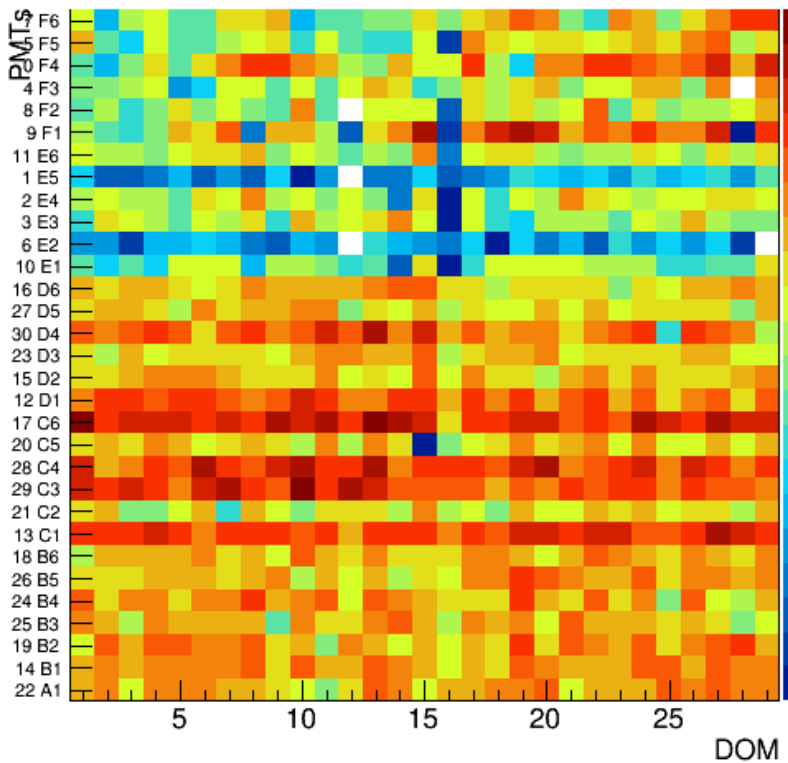


QE

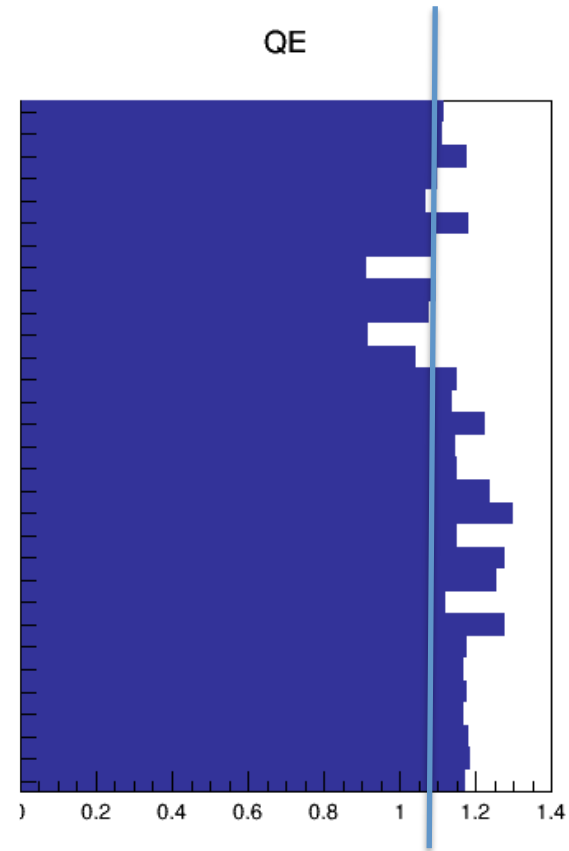


K40 efficiency  
Projections show median

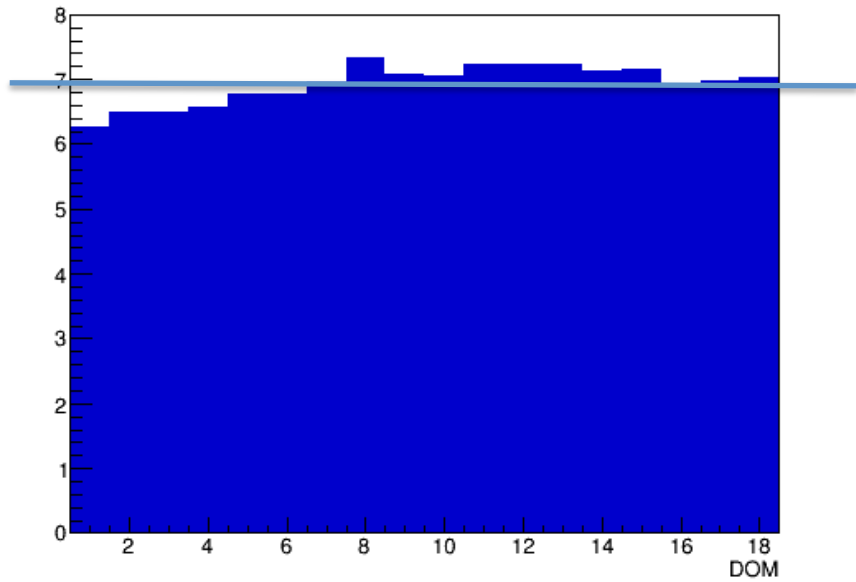
ARCA run 5623  
Color scale 0.8-1.4



QE

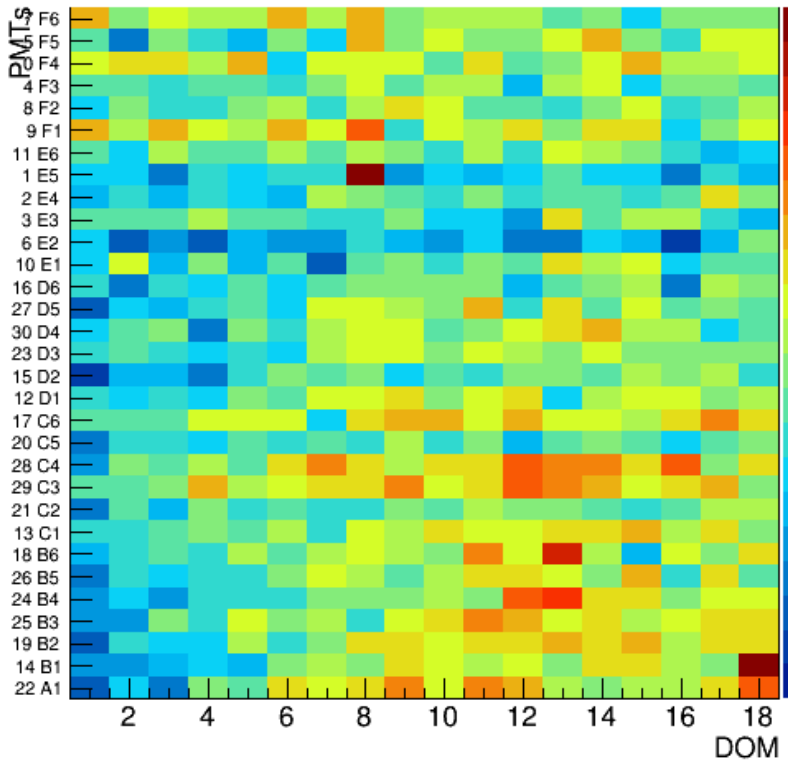


SR

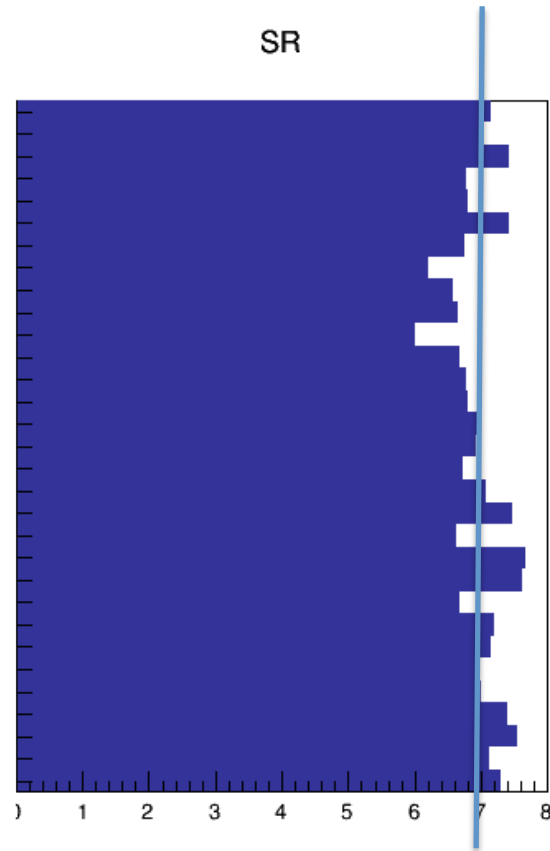


Single Rate (Baseline fit)  
Projections show median

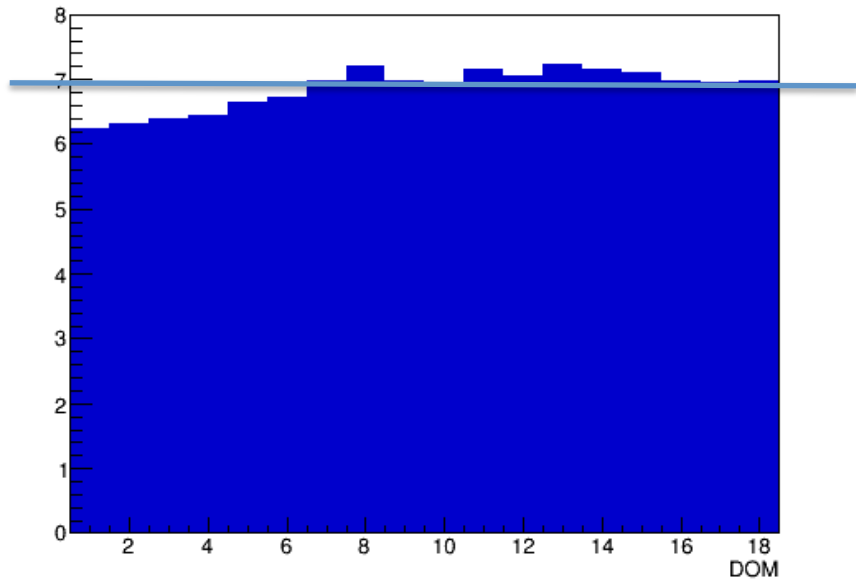
ORCA run 3104  
Color scale 5kHz-10kHz



SR

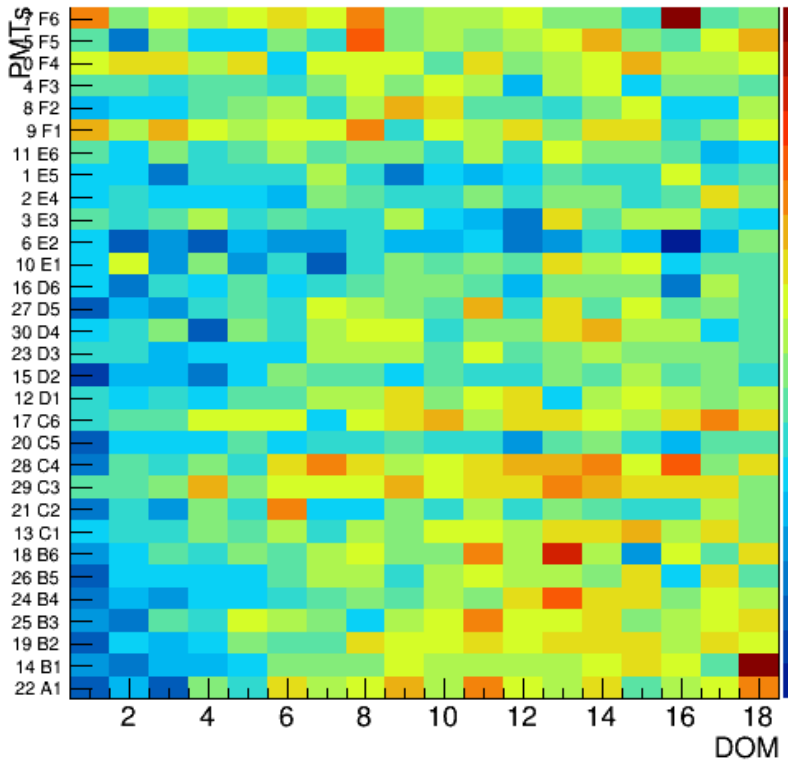


SR

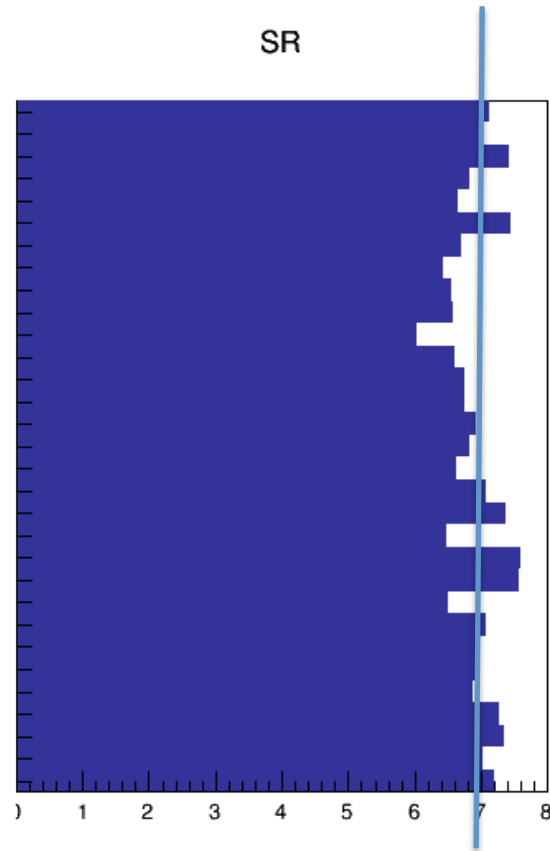


Single Rate (Baseline fit)  
Projections show median

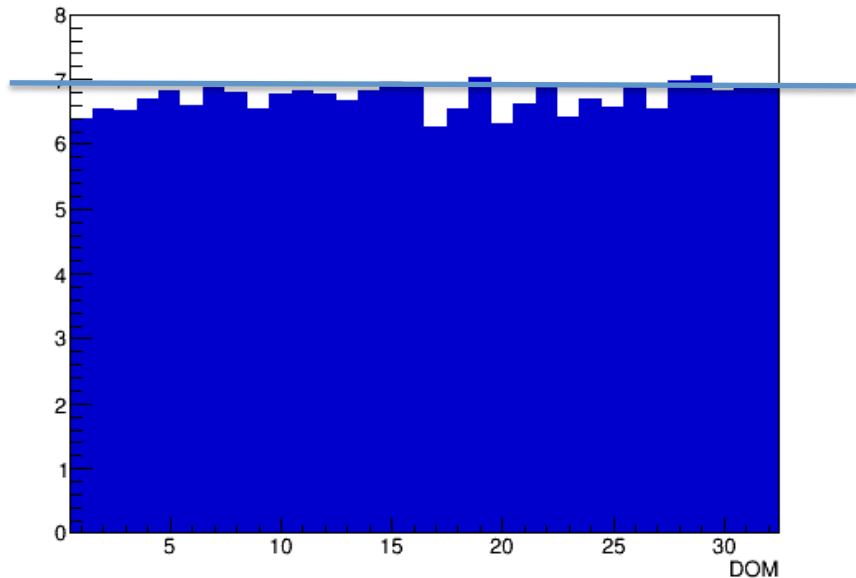
ORCA run 3214  
Color scale 5kHz-10kHz



SR

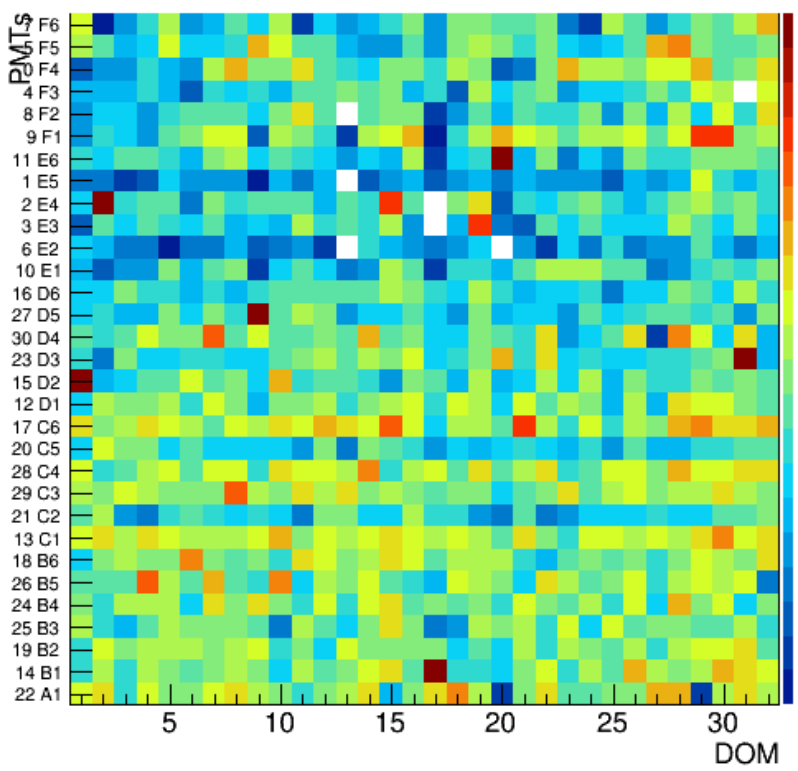


SR

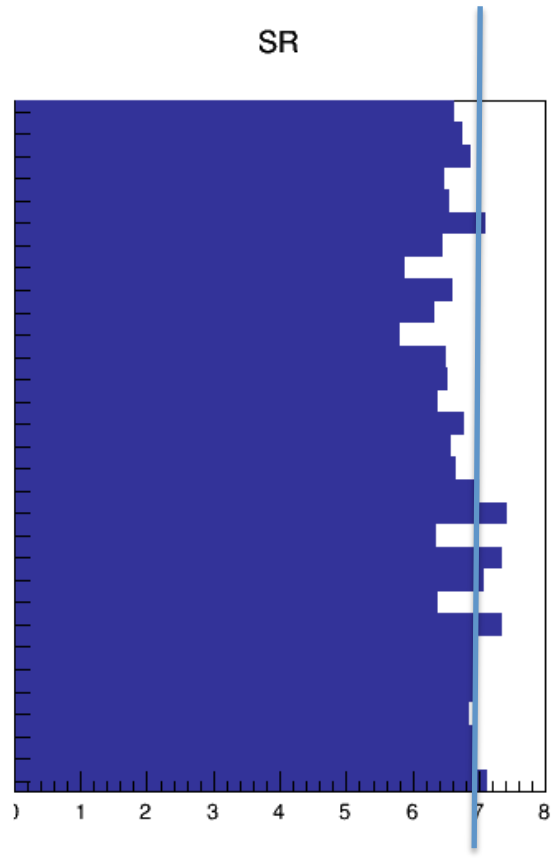


Single Rate (Baseline fit)  
Projections show median

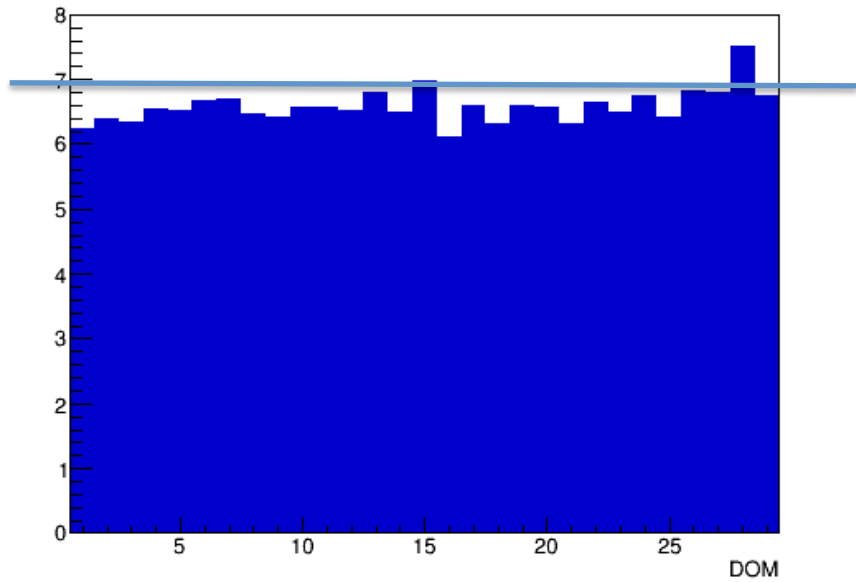
ARCA run 5045  
Color scale 5kHz-10kHz



SR

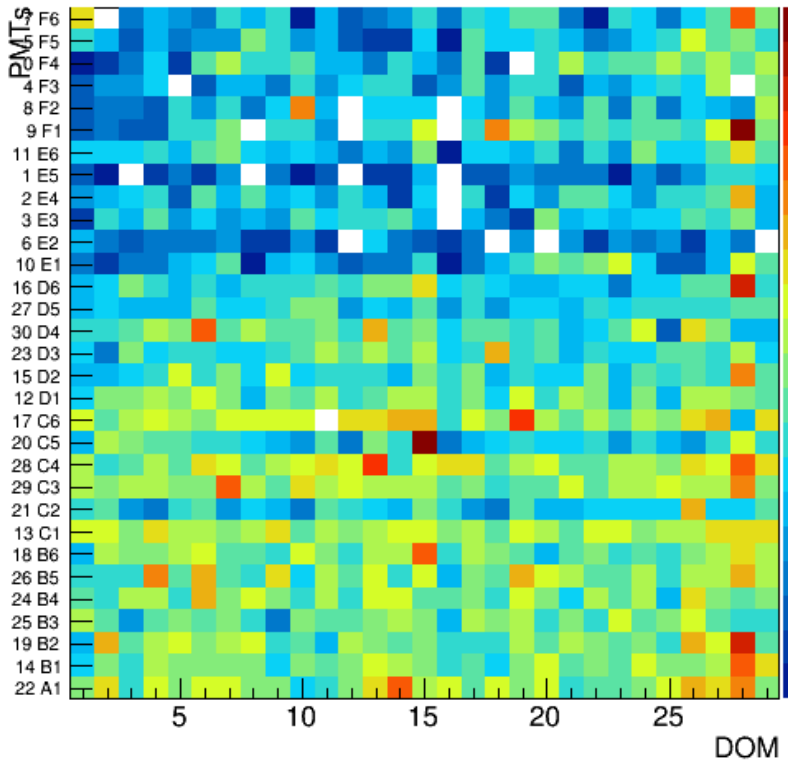


SR



Single Rate (Baseline fit)  
Projections show median

ARCA run 5623  
Color scale 5kHz-10kHz



SR

