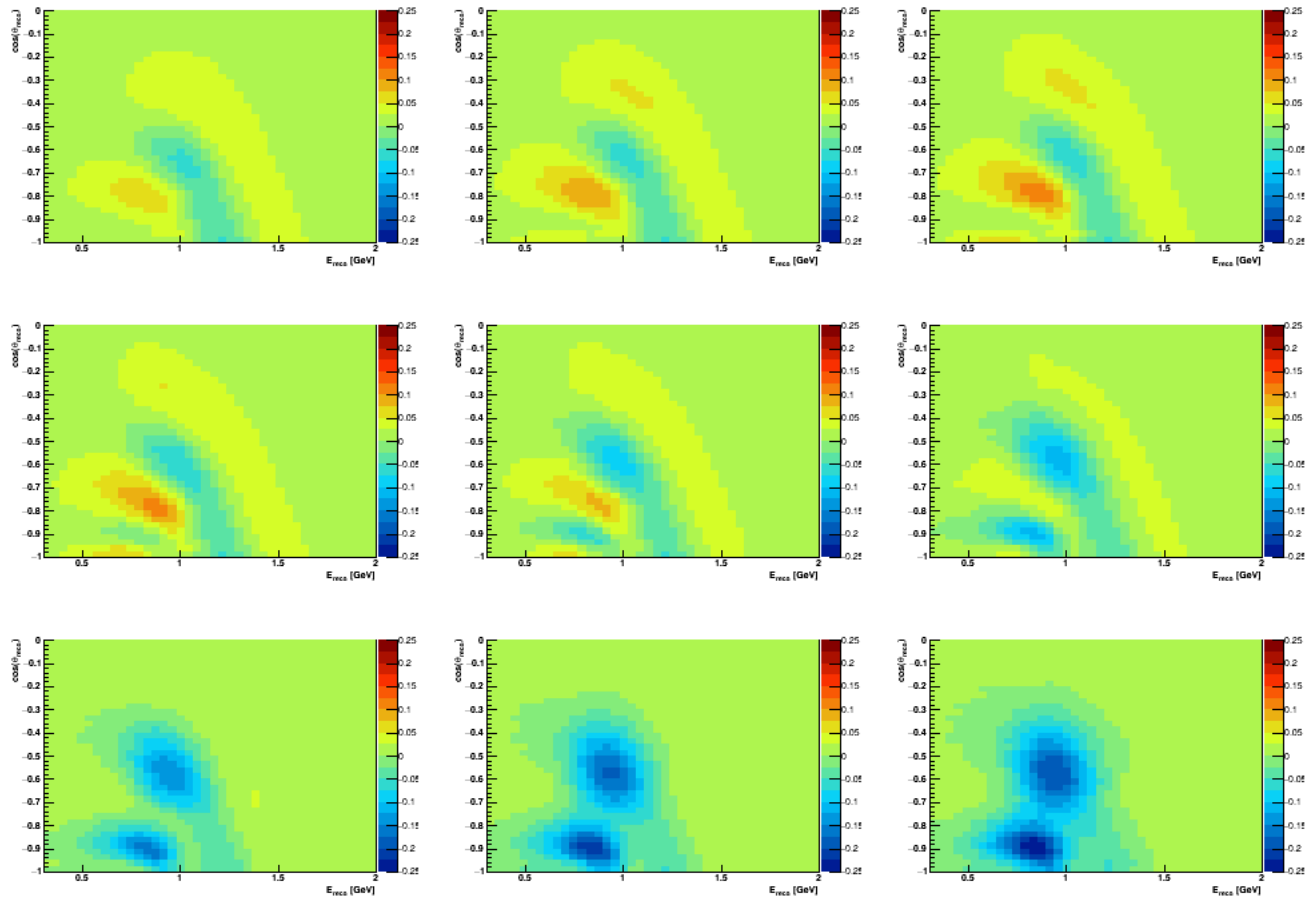
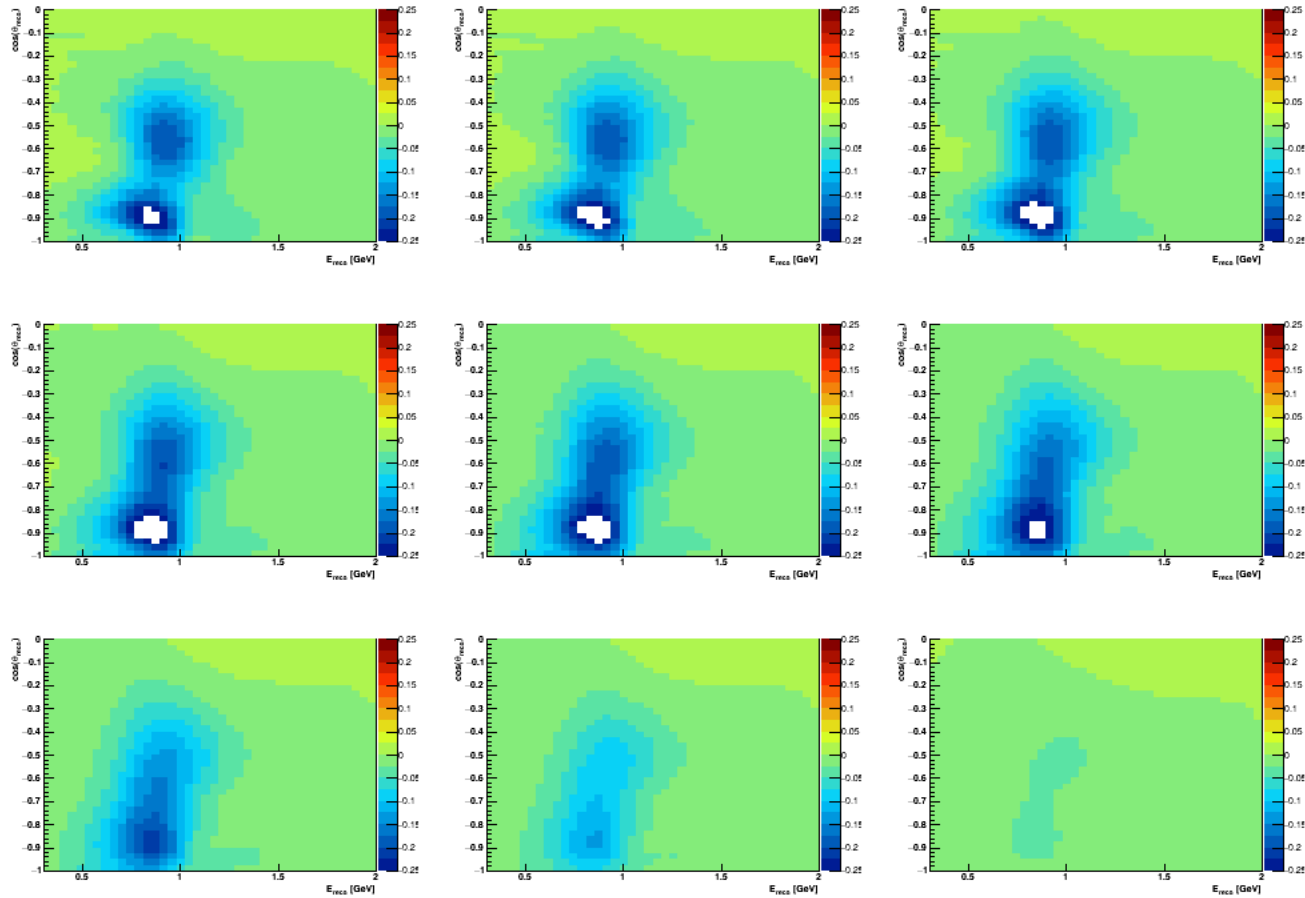


# Oscillation asymmetry (NH-IH)/sqrt(NH) for tracklike events with 9 cuts in PID



Best 'sensitivity' around a cut of 0.5-0.6 (5.1 sigma)

# Oscillation asymmetry (NH-IH)/sqrt(NH) for showerlike events with 9 cuts in PID



Best 'sensitivity' around a cut of 0.5-0.6 (5.1 sigma)

# Oscillation asymmetry (NH-IH)/sqrt(NH) separately in 10 PID bins

